



## **GOLDI SOLAR OFFICE**

*Office Interiors*

Client:	Goldi Solar Pvt. Ltd.
Site Location:	Nexus Tower, Athwa Gate, Surat
Carpet Area:	2090 sq m/ 22,500 sq ft
Cost of Project:	Confidential
Year of Completion:	2026
Services:	Interior Design, MEP Integration, Landscape, Art Integration
Firms Involved:	Essteam



## THE PROJECT:

Goldi Solar's rapidly expanding operations created the need for a centralized corporate workspace that could bring multiple departments and teams under one roof. Planned as an interim headquarters, the project was envisioned to support the company's present scale while reflecting its growth, identity, and future aspirations. The design focused on creating an efficient workplace environment that balances functionality, employee experience, and brand presence.

## THE SITE:

The project occupies a newly constructed exposed RCC commercial building leased by the client for a short-term period before moving into a permanent headquarters. This led to a design approach focused on minimal permanent interventions, with adaptable interior elements that could be dismantled and relocated in the future.



**15.2 GW**  
Capacity



**15 Years**  
Of Rich Industry  
Experience



**8000+**  
Workforce



**13000+**  
EPC Customer


Goldi Solar is India's largest Solar PV module manufacturing company with annual capacity of 15.2 GW. Since inception in 2011, the company has been supplying world-class high efficiency modules in India and various geographies across the globe.

Recently, the company recorded the largest and highest manufacturing expansion in India's renewable industry for Solar PV Modules from 3 GW to 15.2 GW in the last 14 months.

Consistent with its manufacturing excellence and Quality-first commitment, the company has built a one-of-its-kind AI-powered state-of-the-art manufacturing facilities in Gujarat, India, namely Pipodara, Navsari, Kosamba and Nana Borsara.

### Strong Retail Presence In **INDIA**



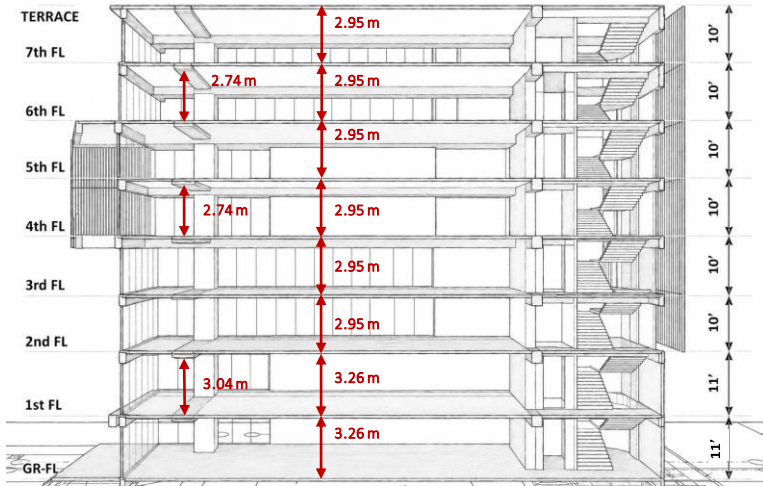
-  Channel partners
-  Dealers
-  Channel partners/Dealers

### EXPORTING TO 20+ COUNTRIES



**GOLDI  
SOLAR**

## 1. Structural Height Constraints



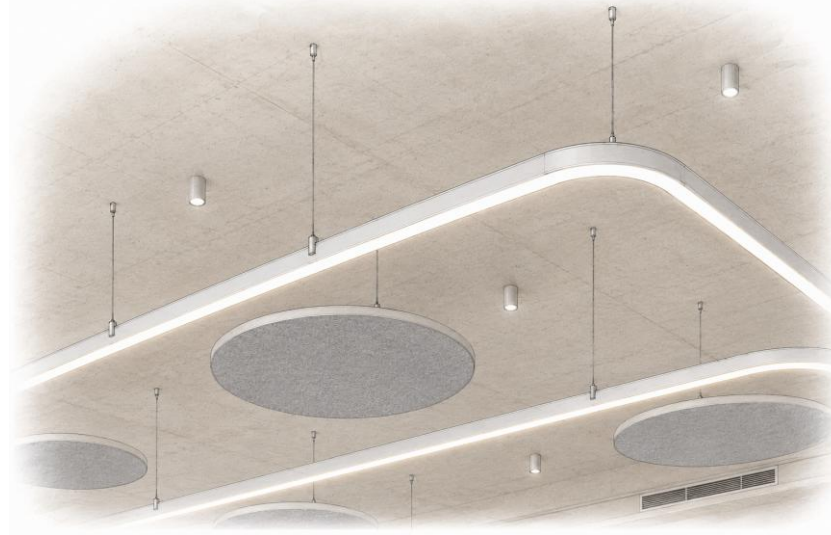
### Challenge

The building had compact floor heights, with upper floors offering limited usable ceiling clearance. Large post-tensioned beams further reduced the effective interior volume.

### Strategy

The exposed RCC structure was retained as a design feature, minimizing the use of false ceilings to preserve spatial openness and maximize perceived height.

## 2. Integration of Building Services



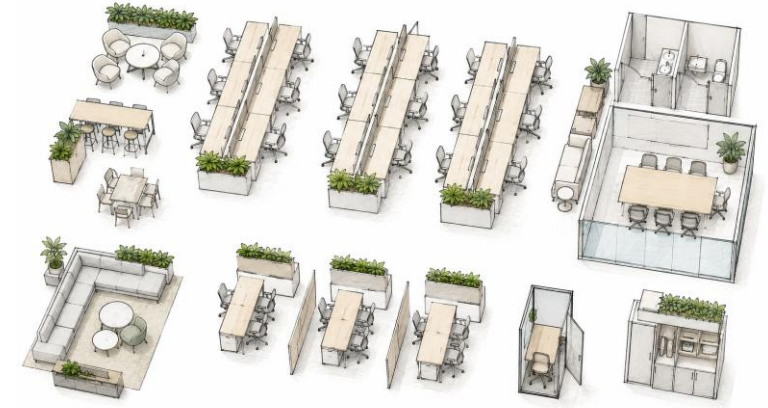
### Challenge

With exposed ceilings becoming a key design decision, integrating HVAC systems, electrical services, and acoustics without visual clutter became critical.

### Strategy

Services were carefully coordinated within the architectural framework using customized routing systems, organized service planning, integration of floor-standing air-conditioning units, and acoustic interventions where required.

## 3. Designing for Change



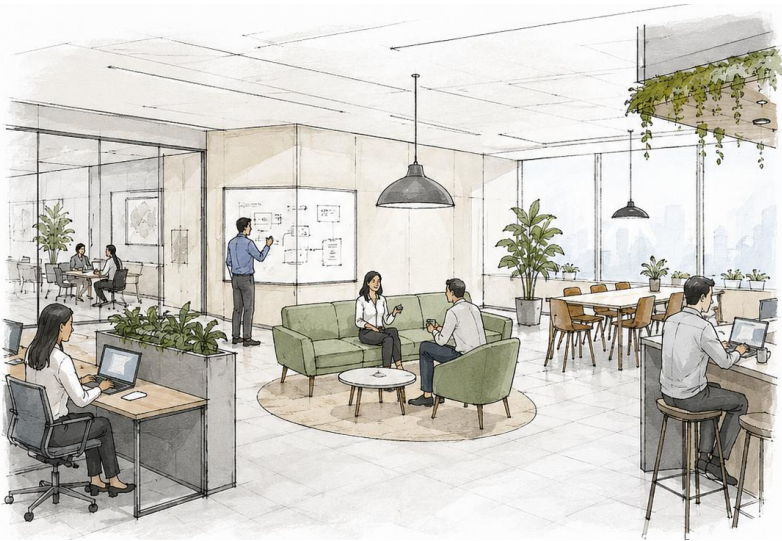
### Challenge

As the project is located within a leased property, extensive permanent alterations may be difficult to justify, particularly where future operational needs and space requirements may evolve.

### Strategy

The design prioritizes modular planning and adaptable systems, minimizing permanent interventions while allowing future restructuring and evolving workspace requirements.

## 4. People - Centered Workplace Design



### Challenge

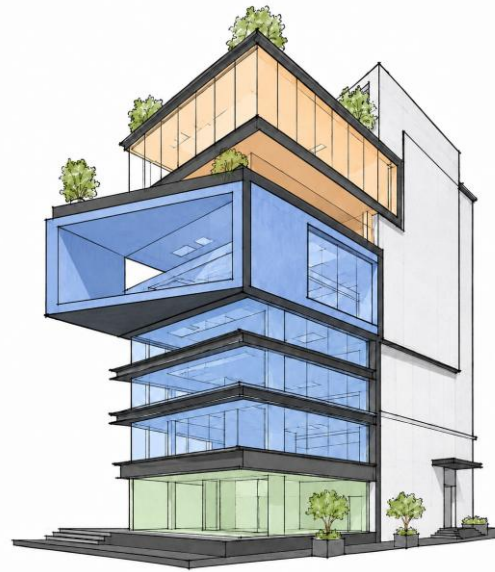
The workplace needed to support diverse work styles, collaboration, employee well-being, and varying departmental needs.

### Strategy

Detailed discussions with department heads guided the floor-wise planning, integrating focused work areas, collaboration zones, meeting spaces, phone booths, breakout areas, and social spaces to create an adaptable workplace.

## DESIGN DRIVERS

## 5. Creating Identity within a Commercial Shell



### Challenge

The building was originally designed as a floor-wise commercial property rather than a single corporate headquarters.

### Strategy

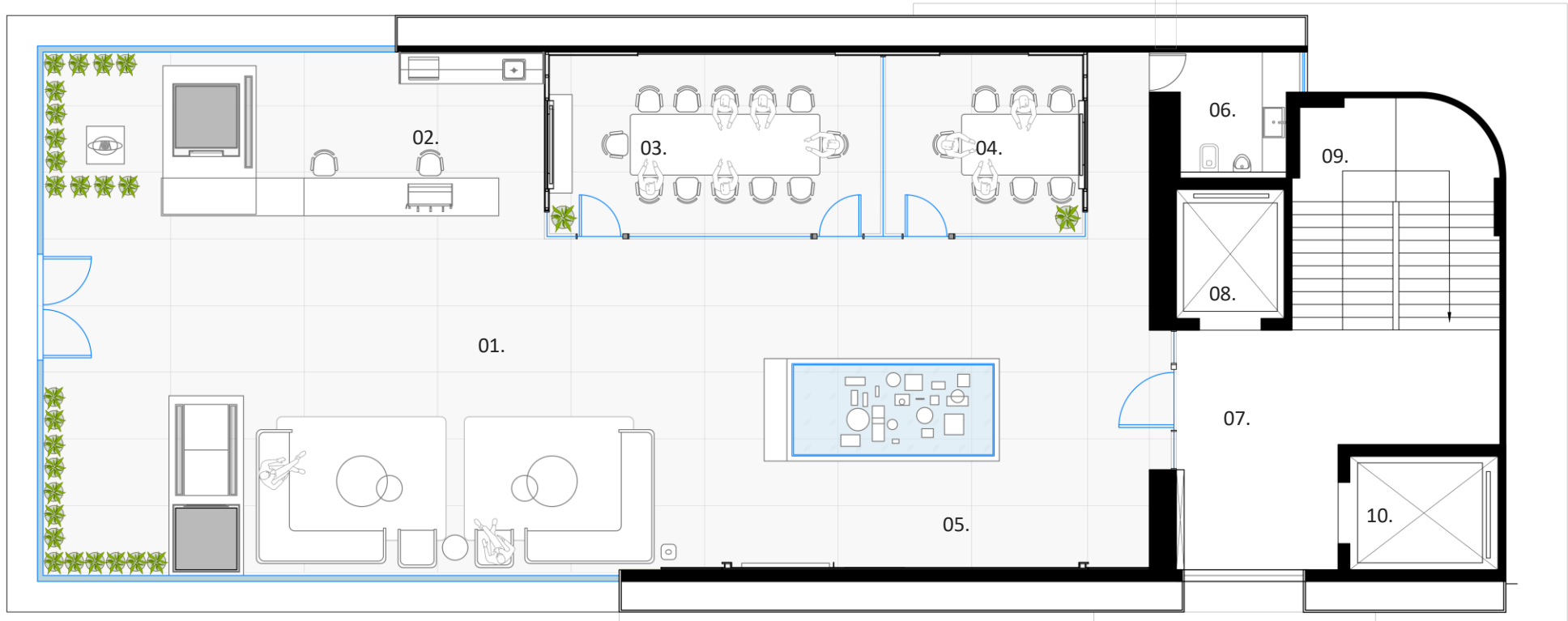
The design transformed the building into a cohesive workplace experience through orientation spaces, visual storytelling, departmental zoning, material consistency, and brand-led interventions.

## Programmatic Distribution



**LEGEND:**

- 01. Waiting Area
- 02. Reception & Cafe
- 03. Conference Room
- 04. Meeting Room
- 05. Display Area
- 06. Toilet
- 07. Foyer
- 08. Lift 1
- 09. Staircase
- 10. Lift 2

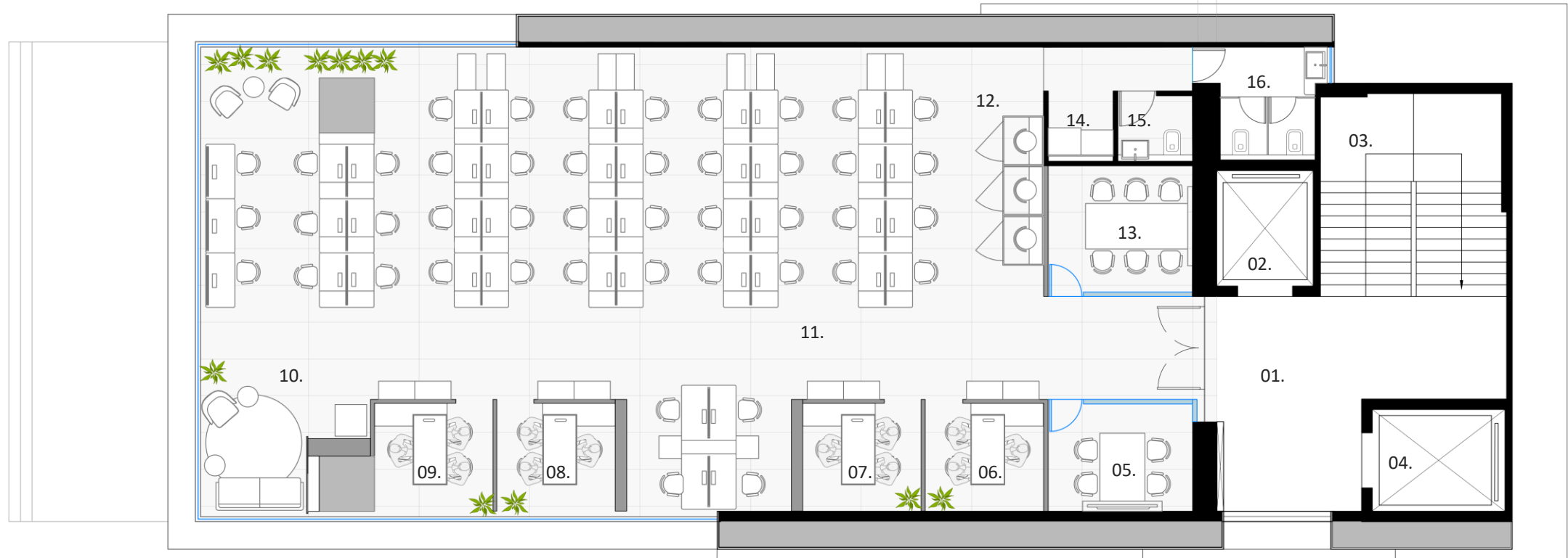


**GROUND FLOOR PLAN**



**LEGEND:**

- |                       |                       |                   |
|-----------------------|-----------------------|-------------------|
| 01. Foyer             | 08. Manager's Cabin 3 | 15. Female Toilet |
| 02. Lift 1            | 09. Manager's Cabin 4 | 16. Male Toilet   |
| 03. Staircase         | 10. Breakout Zone     |                   |
| 04. Lift 2            | 11. Workstations      |                   |
| 05. Meeting Room 1    | 12. Phone Booths      |                   |
| 06. Manager's Cabin 1 | 13. Meeting Room 2    |                   |
| 07. Manager's Cabin 2 | 14. Drinking Water    |                   |

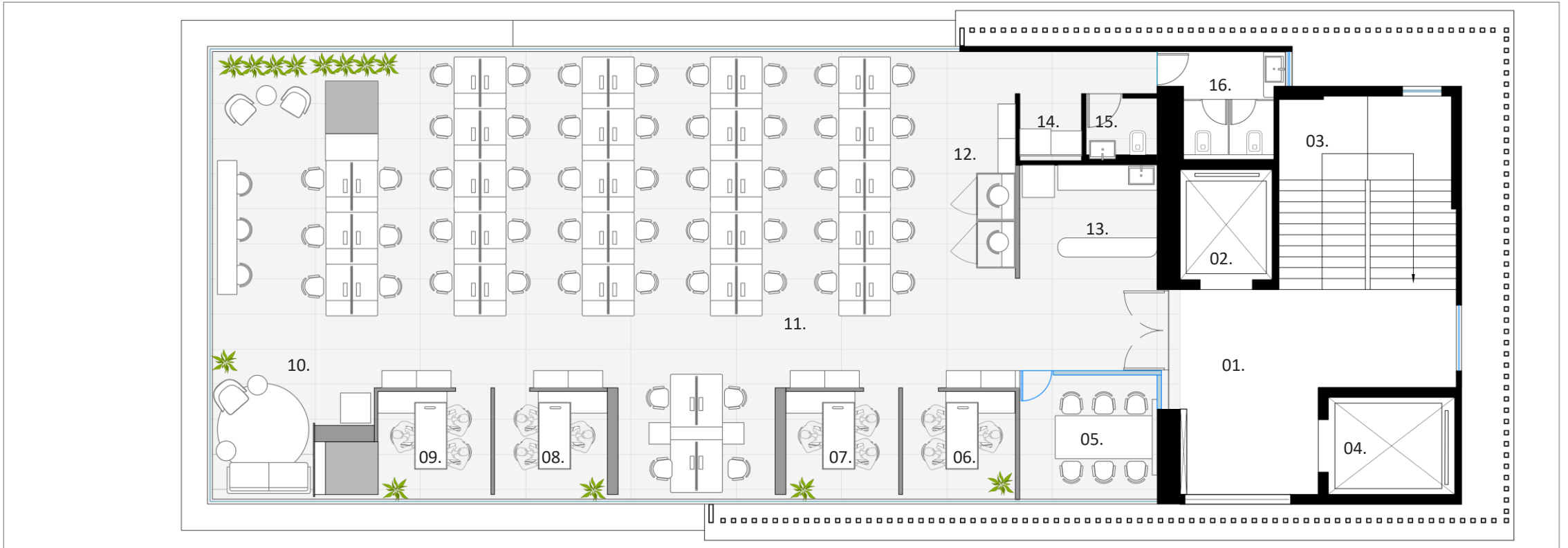


**FIRST FLOOR PLAN**



**LEGEND:**

- |                       |                       |                   |
|-----------------------|-----------------------|-------------------|
| 01. Foyer             | 08. Manager's Cabin 3 | 15. Female Toilet |
| 02. Lift 1            | 09. Manager's Cabin 4 | 16. Male Toilet   |
| 03. Staircase         | 10. Breakout Zone     |                   |
| 04. Lift 2            | 11. Workstations      |                   |
| 05. Meeting Room      | 12. Phone Booths      |                   |
| 06. Manager's Cabin 1 | 13. Energy Hub        |                   |
| 07. Manager's Cabin 2 | 14. Drinking Water    |                   |

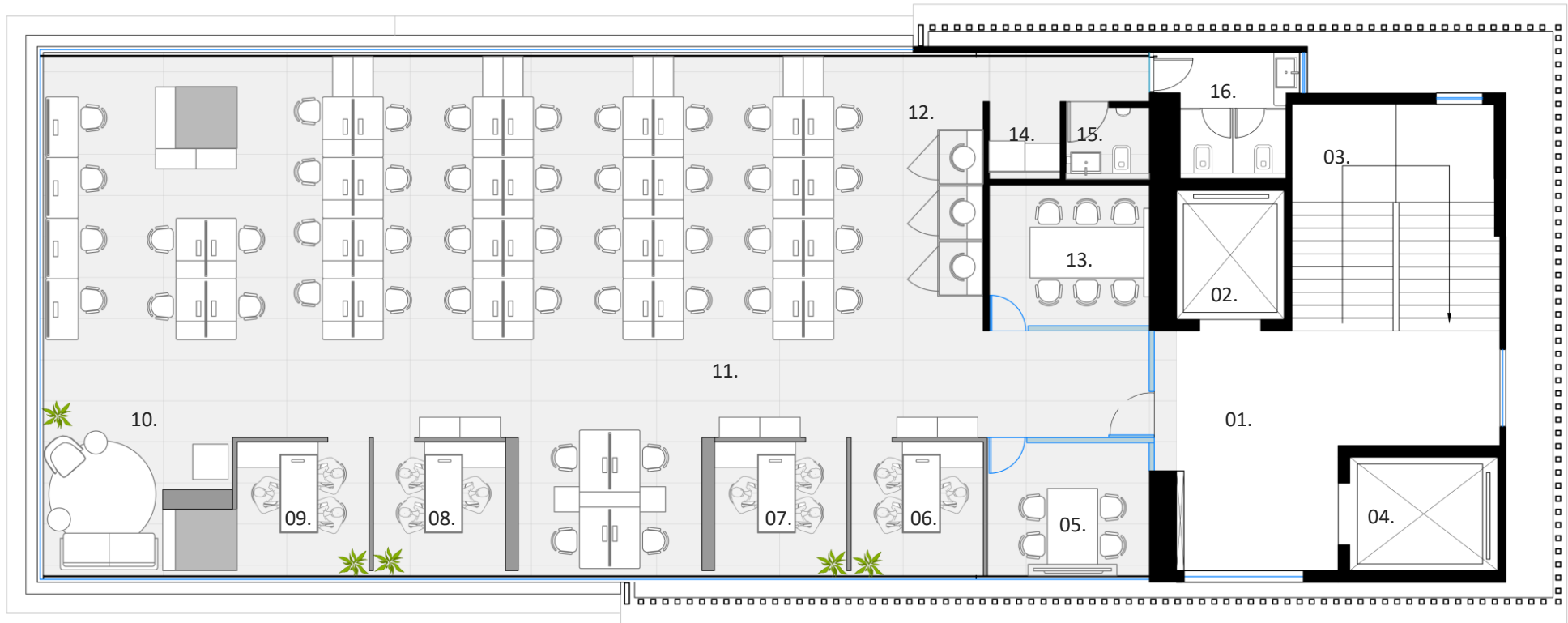


**SECOND FLOOR PLAN**



**LEGEND:**

- |                       |                       |                   |
|-----------------------|-----------------------|-------------------|
| 01. Foyer             | 08. Manager's Cabin 3 | 15. Female Toilet |
| 02. Lift 1            | 09. Manager's Cabin 4 | 16. Male Toilet   |
| 03. Staircase         | 10. Breakout Zone     |                   |
| 04. Lift 2            | 11. Workstations      |                   |
| 05. Meeting Room 1    | 12. Phone Booths      |                   |
| 06. Manager's Cabin 1 | 13. Meeting Room 2    |                   |
| 07. Manager's Cabin 2 | 14. Drinking Water    |                   |

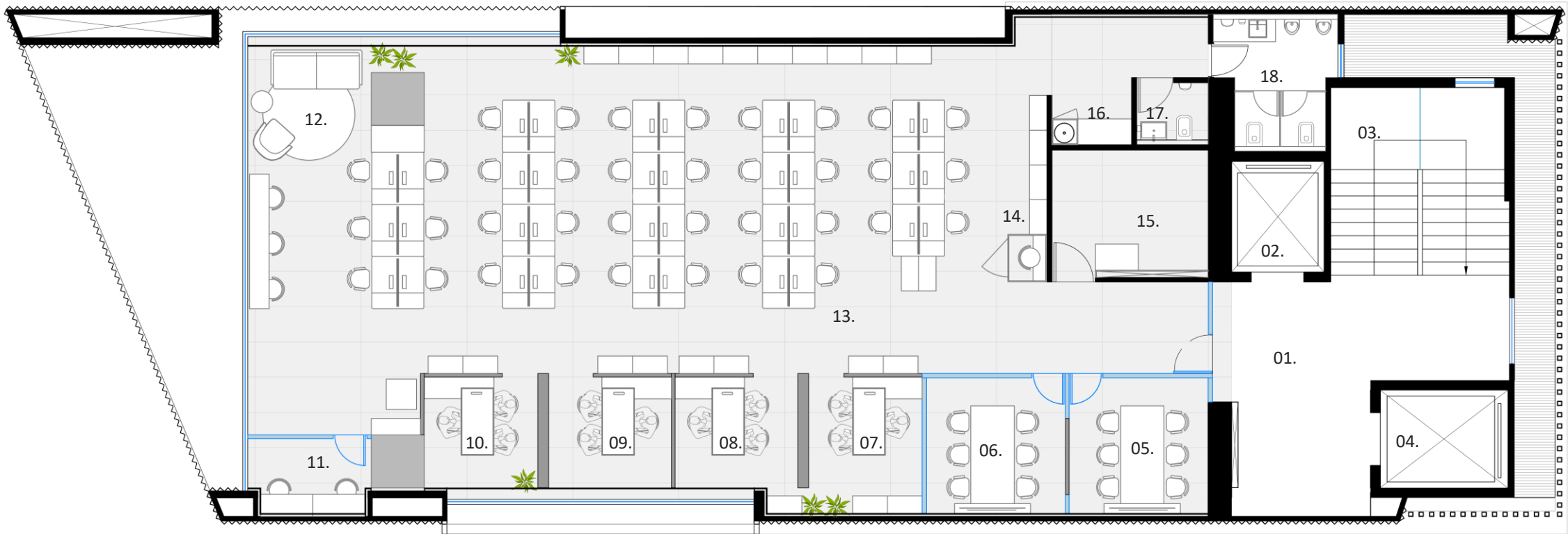


**THIRD FLOOR PLAN**



**LEGEND:**

- |                       |                             |                    |
|-----------------------|-----------------------------|--------------------|
| 01. Foyer             | 08. Manager's Cabin 2       | 15. Server Room    |
| 02. Lift 1            | 09. Manager's Cabin 3       | 16. Drinking Water |
| 03. Staircase         | 10. Manager's Cabin 4       | 17. Female Toilet  |
| 04. Lift 2            | 11. IT Repair & Maintenance | 18. Male Toilet    |
| 05. Meeting Room 1    | 12. Breakout Zone           |                    |
| 06. Meeting Room 1    | 13. Workstations            |                    |
| 07. Manager's Cabin 1 | 14. Phone Booth             |                    |

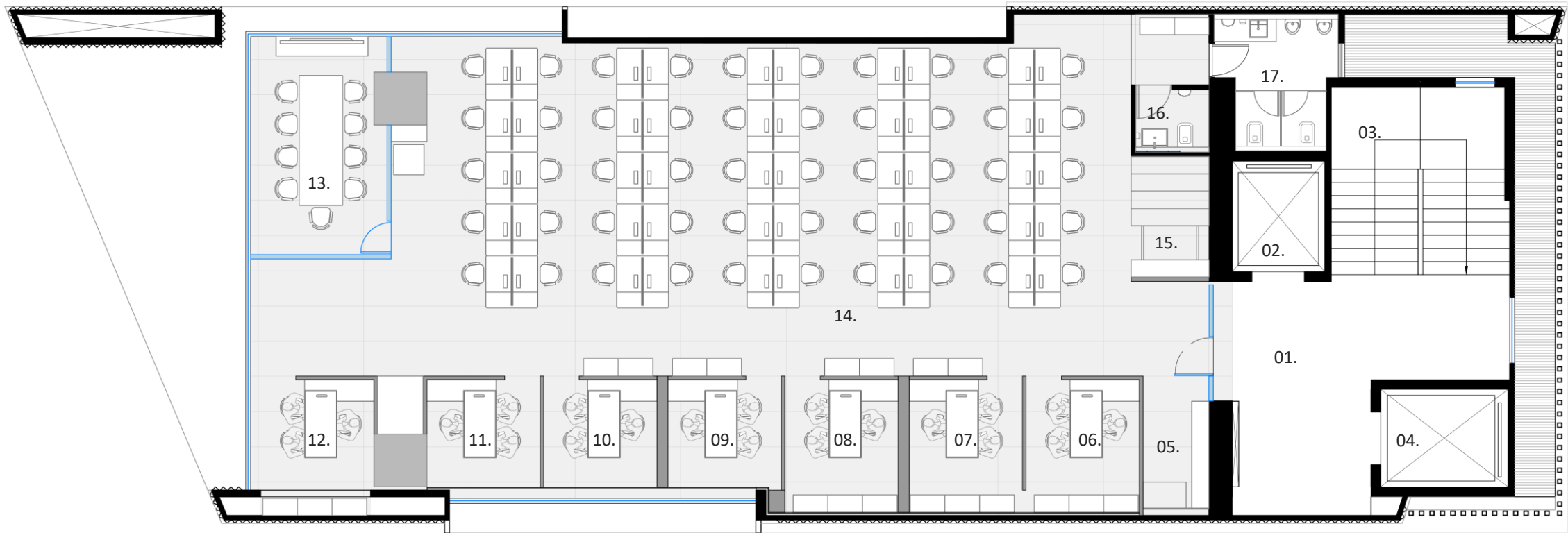


**FOURTH FLOOR PLAN**



**LEGEND:**

- |                       |                       |                              |
|-----------------------|-----------------------|------------------------------|
| 01. Foyer             | 08. Manager's Cabin 3 | 15. File Compactor & Storage |
| 02. Lift 1            | 09. Manager's Cabin 4 | 16. Female Toilet            |
| 03. Staircase         | 10. Manager's Cabin 5 | 17. Male Toilet              |
| 04. Lift 2            | 11. Manager's Cabin 6 |                              |
| 05. File Storage      | 12. Manager's Cabin 7 |                              |
| 06. Manager's Cabin 1 | 13. Meeting Room      |                              |
| 07. Manager's Cabin 2 | 14. Workstations      |                              |

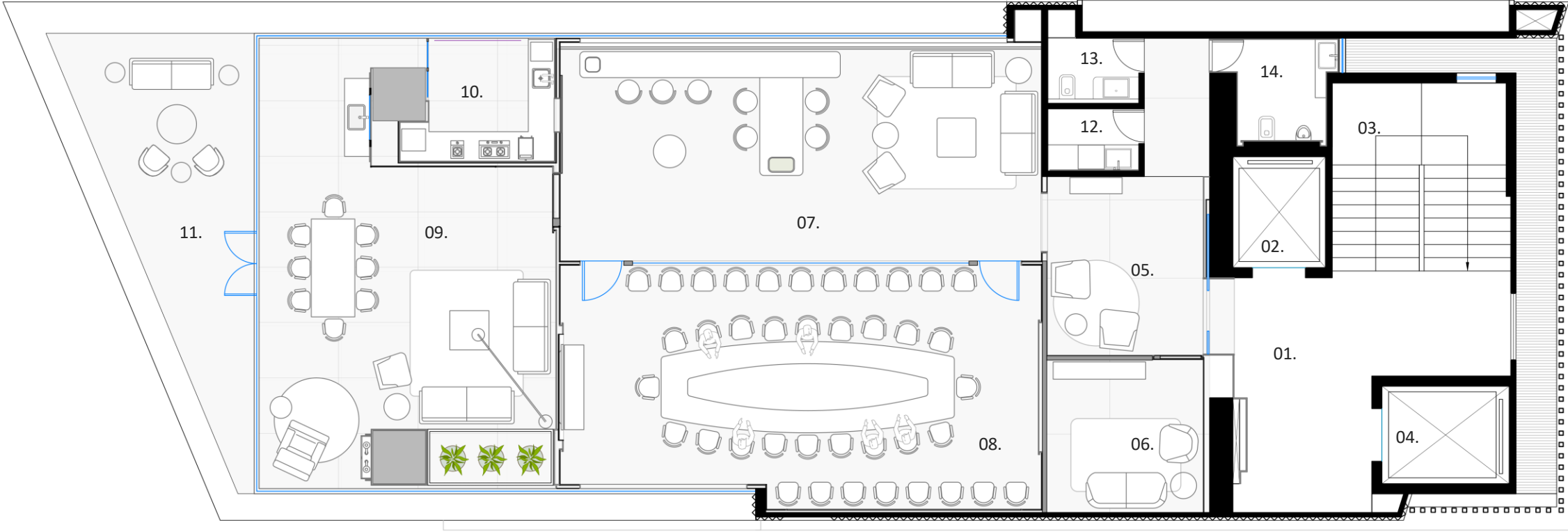


**FIFTH FLOOR PLAN**



**LEGEND:**

- 01. Foyer
- 02. Lift 1
- 03. Staircase
- 04. Lift 2
- 05. Entrance
- 06. AV Recording Studio
- 07. Lounge
- 08. Board Room
- 09. Executive Dining/ Lounge
- 10. Pantry
- 11. Deck
- 12. Pantry
- 13. Female Toilet
- 14. Male Toilet

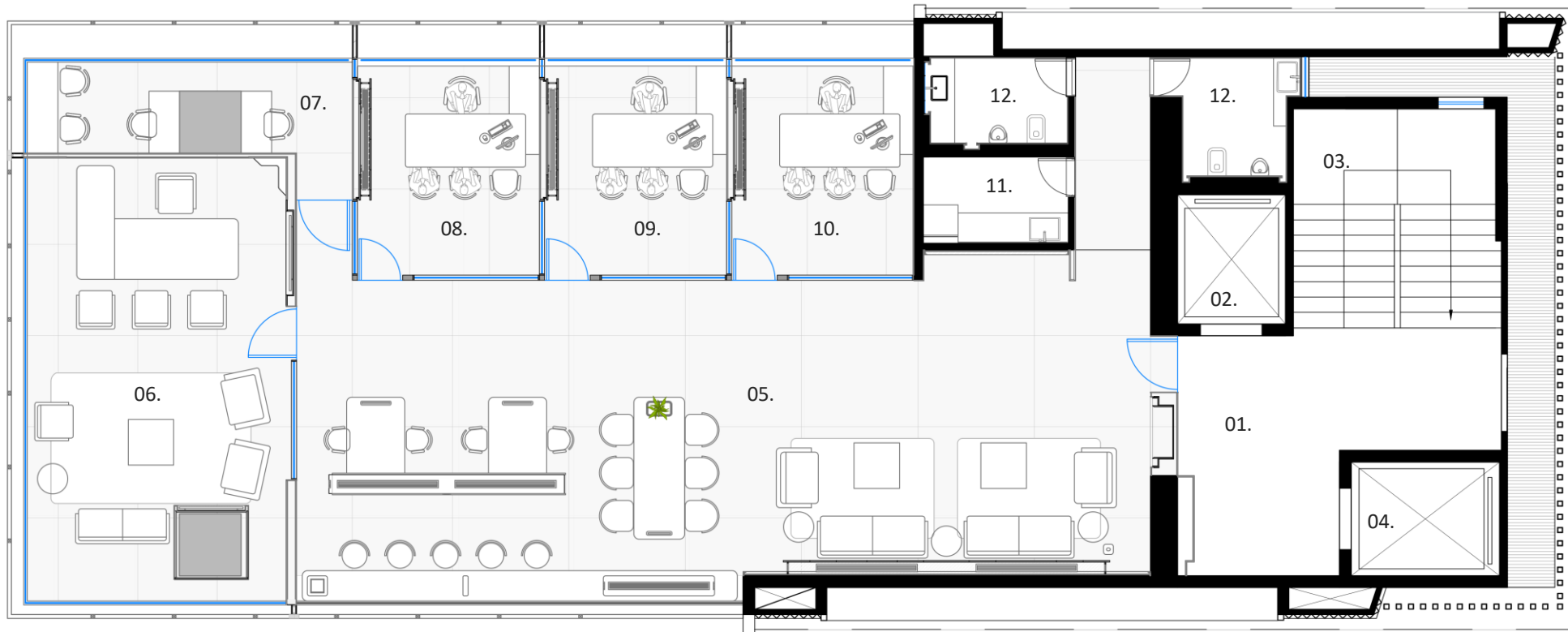


**SIXTH FLOOR PLAN**



**LEGEND:**

- 01. Foyer
- 02. Lift 1
- 03. Staircase
- 04. Lift 2
- 05. Lounge
- 06. Director's Cabin
- 07. PA & EA Cabin
- 08. Executive Cabin 1
- 09. Executive Cabin 2
- 10. Executive Cabin 3
- 11. Pantry
- 12. Toilet



**SEVENTH FLOOR PLAN**

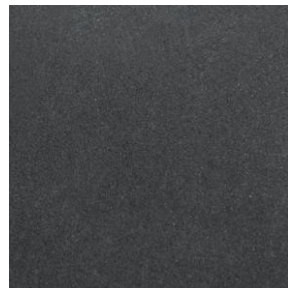




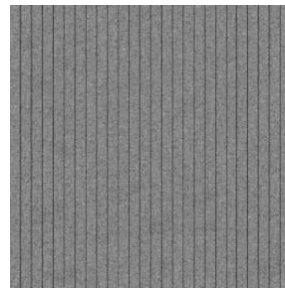
ITALIAN MARBLE



DYED OAK VENEER



DARK GRAY POWDER  
COATED METAL



ACOUSTIC PANEL



ACCENT WOOD



STUCCO PAINT



ACCENT STONE

## GROUND FLOOR – MATERIAL PALETTE



**GROUND FLOOR**



**GROUND FLOOR**



The Ground Floor was designed as the first point of interaction with Goldi Solar, functioning as an orientation gallery that introduces visitors to the company's identity, achievements, and future vision. The space was envisioned as an experience rather than just a reception area, creating a strong first impression while encouraging engagement. To activate the gallery beyond its primary function, a café was integrated within the space, bringing warmth and activity into the environment. The aroma of freshly brewed coffee adds a sensory layer to the experience, making the space feel more inviting and memorable.



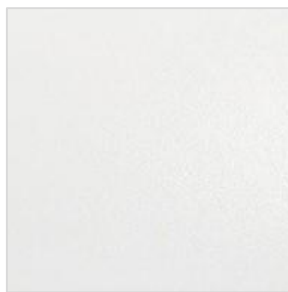
**GROUND FLOOR – MEETING ROOM**



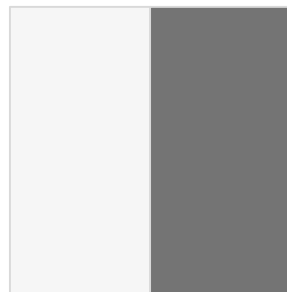
FULL BODY TILE



LAMINATE



WHITE POWDER  
COATED METAL



LAMINATE



FLUTED ACOUSTIC  
PANEL



STUCCO PAINT



JUTE - RUG

## TYPICAL FLOOR (FIRST TO FIFTH) – MATERIAL PALETTE



**TYPICAL FLOOR (FIRST TO FIFTH)**

The workstation floors were designed as department-focused environments that balance functionality with a strong workplace identity. To accommodate services within the constrained floor plates while maintaining a clean visual language, custom trench systems were integrated along beam offsets, discreetly routing electrical, HVAC, drainage, and service lines through the workspace. Department-specific color palettes were also introduced, with each floor tailored to reflect the nature of its team and create distinct workplace identities within a cohesive environment.



## TYPICAL FLOOR (FIRST TO FIFTH)



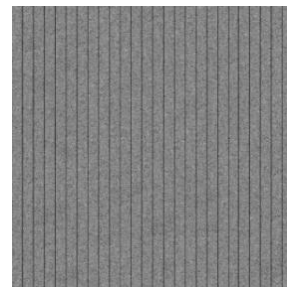
ITALIAN MARBLE



DYED OAK VENEER



DARK GRAY POWDER  
COATED METAL



ACOUSTIC PANEL



ACCENT WOOD



STUCCO PAINT



ACCENT STONE

## EXECUTIVE FLOORS (SIXTH & SEVENTH) – MATERIAL PALETTE



SIXTH FLOOR – LOUNGE



SIXTH FLOOR – LOUNGE



The boardroom was designed as a high-performance meeting environment where spatial design and technology work together seamlessly. Integrated lighting, acoustic treatments, and advanced communication systems were carefully coordinated to support presentations, virtual meetings, and discussions with clarity and comfort.



SIXTH FLOOR – EXECUTIVE LOUNGE/ DINING



**SIXTH FLOOR – EXECUTIVE LOUNGE/ DINING**



The executive floor was conceived as a refined and private workspace that balances leadership functions with informal interaction. Along with executive cabins and meeting spaces, the floor incorporates lounges and collaborative areas to encourage discussions beyond formal settings, creating a more connected and engaging work environment.



SEVENTH FLOOR – LOUNGE



**SEVENTH FLOOR – LOUNGE & EXECUTIVE CABIN**



**SEVENTH FLOOR – DIRECTOR'S CABIN**



SEVENTH FLOOR – DIRECTOR'S CABIN



SURAT HYDERABAD

ESSTEAM DESIGN SERVICES LLP

contact us

office.essteam@gmail.com | +91 99090 16610

visit us

 [www.essteam.in](http://www.essteam.in)

 [www.facebook.com/EssTeam](https://www.facebook.com/EssTeam)

 [www.instagram.com/studio\\_essteam/](https://www.instagram.com/studio_essteam/)

4<sup>th</sup> Floor, 'Samanvay', Near Chandni Chowk, Piplod, Surat – 395007 INDIA.

