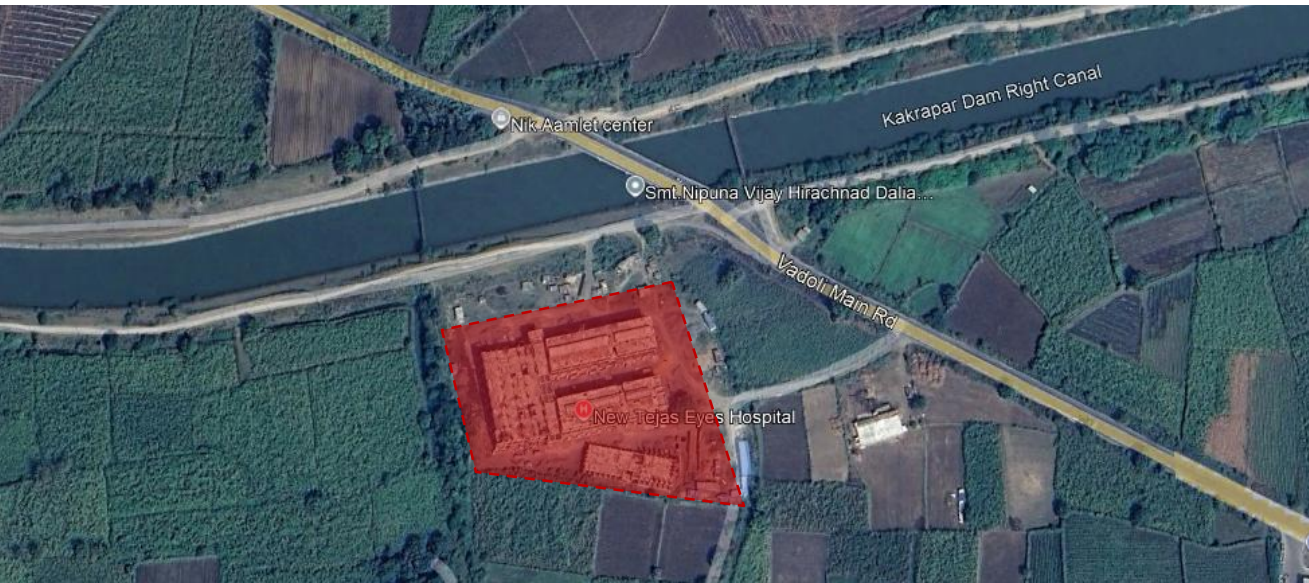




PRISM of HOPE

Architectural Design for a Ophthalmology Hospital

Client:	Divyjayoti Trust
Site Location:	Mandvi Dist., Surat
Construction Area:	1,75,517 sq ft / 16,306 sq m
Cost of Project:	Confidential
Year of Completion:	2025
Services:	Masterplan, Architecture, Interior Design, MEP Integration, Landscape
Firms Involved:	Essteam



THE PROJECT:

Divyajyoti Trust Eye Hospital is a 200-bed dedicated ophthalmology facility in Mandvi, Surat, established to deliver accessible, high-quality eye care to underserved rural and tribal communities. The campus integrates advanced clinical infrastructure including 12 operation theatres, OPD/IPD services, and a training center for 140 students, along with on-campus accommodation for doctors, staff, and students. Designed as a sustainable, long-life institution, the project emphasizes efficiency, low maintenance, and a humane, approachable environment that reduces barriers to healthcare access.

THE SITE:

Located along a key regional highway, the site benefits from strong regional connectivity while being set within a predominantly rural context. The location combines accessibility with a quiet setting. This enables a low-density campus with clear zoning, open spaces, and efficient movement.



- BLOCK A: ADMINISTRATION, COMMON FACILITIES, OTs, CSSD & DOCTORS' RESIDENCES
- BLOCK B: OUTPATIENT, INPATIENT DEPARTMENT & STAFF RESIDENCES
- BLOCK C: OUTPATIENT, INPATIENT DEPARTMENT & STAFF RESIDENCES
- BLOCK D: TRAINING CENTRE, AUDITORIUM, HOSTEL
- PRAYER ROOM

The campus follows a three-finger configuration, enabling clear zoning, efficient movement, and optimal daylight. The ground floor houses OPD, administration, and the training center for easy public access, organized around a central courtyard with shared amenities.

The first floor accommodates wards and the OT complex, ensuring a controlled clinical environment. The second floor integrates CSSD and residential spaces for staff and students, with dedicated service routes for efficient operations. Open spaces between blocks act as spill-out zones, enhancing light, ventilation, and overall comfort.



LEGEND

- 1. MAIN ENTRY/ EXIT
- 2. 2-WHEELER PARKING
- 3. BUS PARKING
- 4. 4-WHEELER PARKING
- 5. AMBULANCE PARKING
- 6. DOCTOR'S PARKING
- 7. SECONDARY ENTRY/ EXIT
- 8. ELECTRICAL SUBSTATION
- 9. HOSPITAL
- 10. COURTYARD
- 11. TRAINING CENTRE
- 12. PRAYER ROOM
- 13. STP

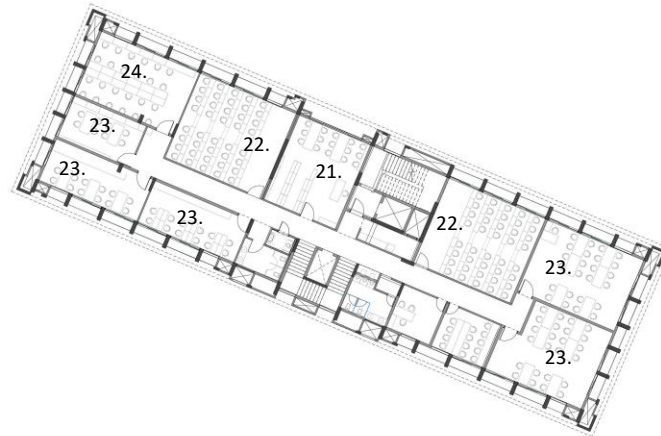
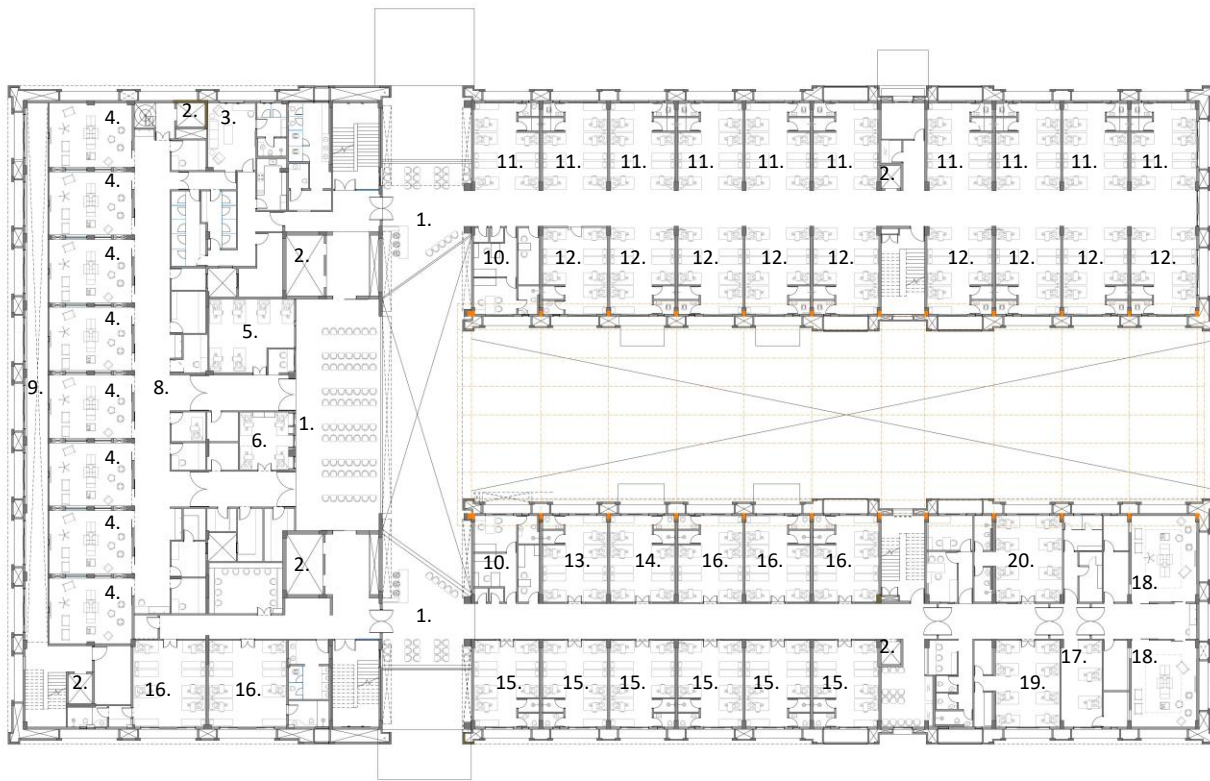


LEGEND

- 1. RECEPTION
- 2. ADMINISTRATION
- 3. ELEVATOR
- 4. OPTICAL SHOP
- 5. OPTICAL FITTING ROOM
- 6. MEDICAL STORE
- 7. KITCHEN AND DINING
- 8. CAFETERIA
- 9. WAITING
- 10. OPD
- 11. COUNSELLING ROOMS

- 12. RECEPTION
- 13. ADMIN
- 14. ELEVATOR
- 15. CLASSROOMS
- 16. SEMINAR ROOM

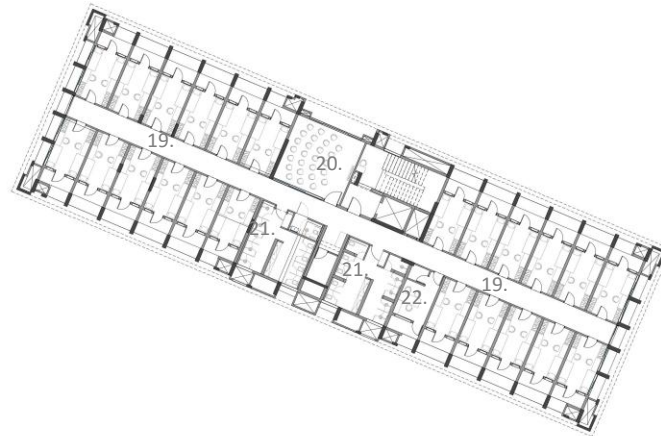
GROUND FLOOR PLAN



LEGEND

- 1. WAITING AREA
- 2. ELEVATOR
- 3. DOCTOR'S ROOM
- 4. OPERATION THEATRE
- 5. PRE-OPERATION
- 6. RECOVERY ROOM
- 7. WET LAB
- 8. CLEAN CORRIDOR
- 9. DIRTY CORRIDOR
- 10. MEDICAL OFFICER
- 11. GENERAL WARD – MALE
- 12. GENERAL WARD – FEMALE
- 13. PEDIATRIC WARD – MALE
- 14. PEDIATRIC WARD - FEMALE
- 15. PAID WARD – MALE
- 16. PAID WARD – FEMALE
- 17. SEPTIC OT PRE-OPERATION
- 18. SEPTIC OT
- 19. SEPTIC OT WARD – MALE
- 20. SEPTIC OT WARD - FEMALE

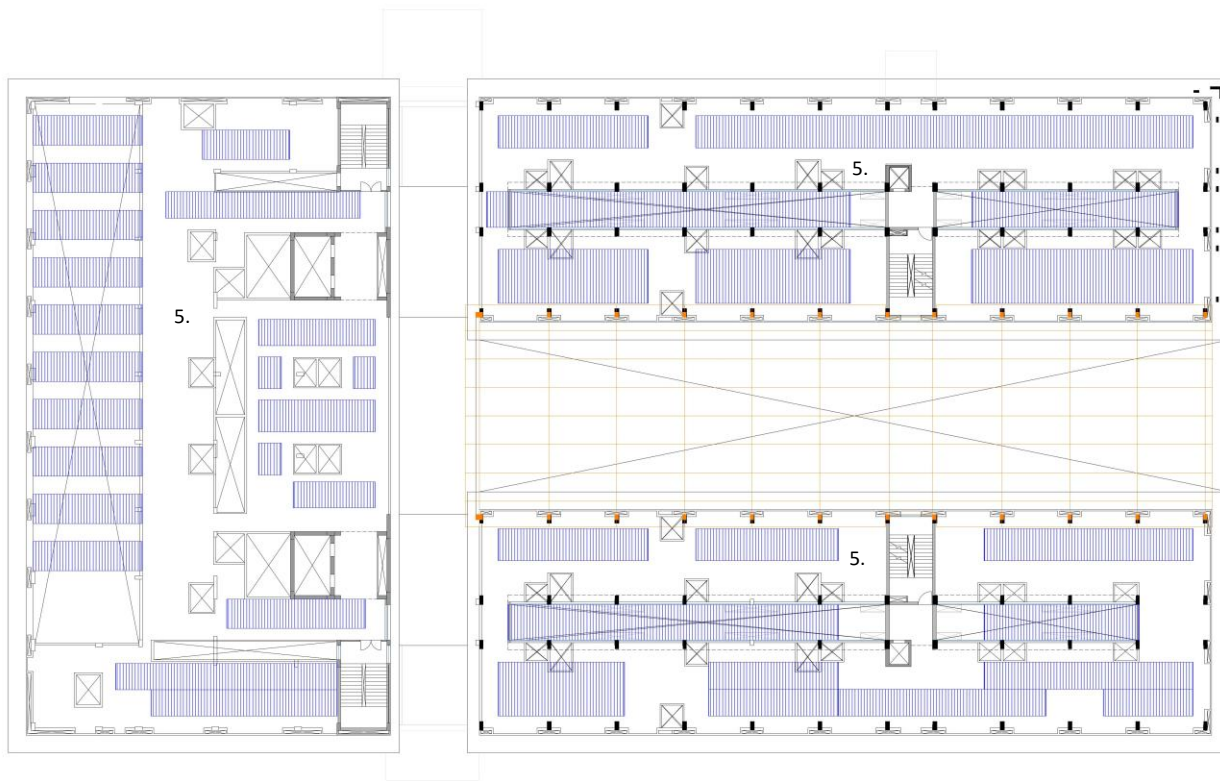
- 21. LIBRARY
- 22. CLASSROOMS
- 23. LABS
- 24. STAFF ROOM



LEGEND

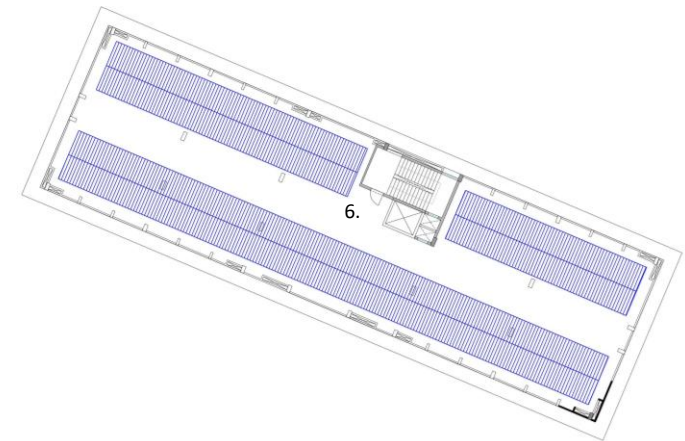
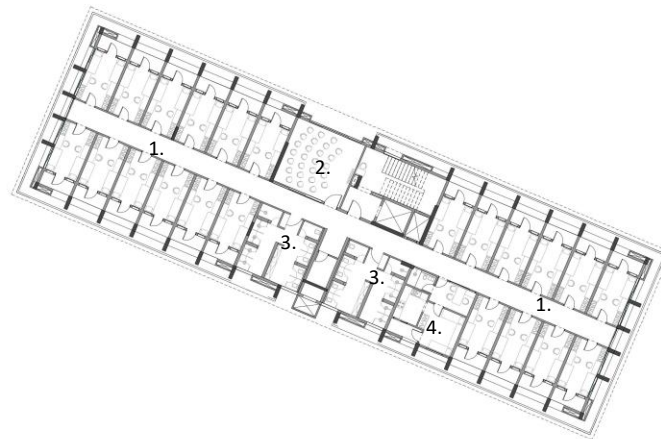
- 1. DOCTOR'S RESIDENCES – 2BHK
- 2. ELEVATORS
- 3. GYM
- 4. INDOOR GAMES
- 5. OPEN TERRACES
- 6. CSSD
- 7. SERVICE TERRACE
- 8. STAFF RESIDENCES – 1BHK
- 9. STAFF RESIDENCES – 1HK
- 10. GUEST 2BHK
- 11. PAID WARD – FEMALE
- 12. DAYCARE WARD – MALE
- 13. DAYCARE WARD – FEMALE
- 14. SEMI SPECIAL ROOM – MALE
- 15. SEMI SPECIAL ROOM – FEMALE
- 16. ADMIN
- 17. SUITE ROOM TYPE A
- 18. SUITE ROOM TYPE B

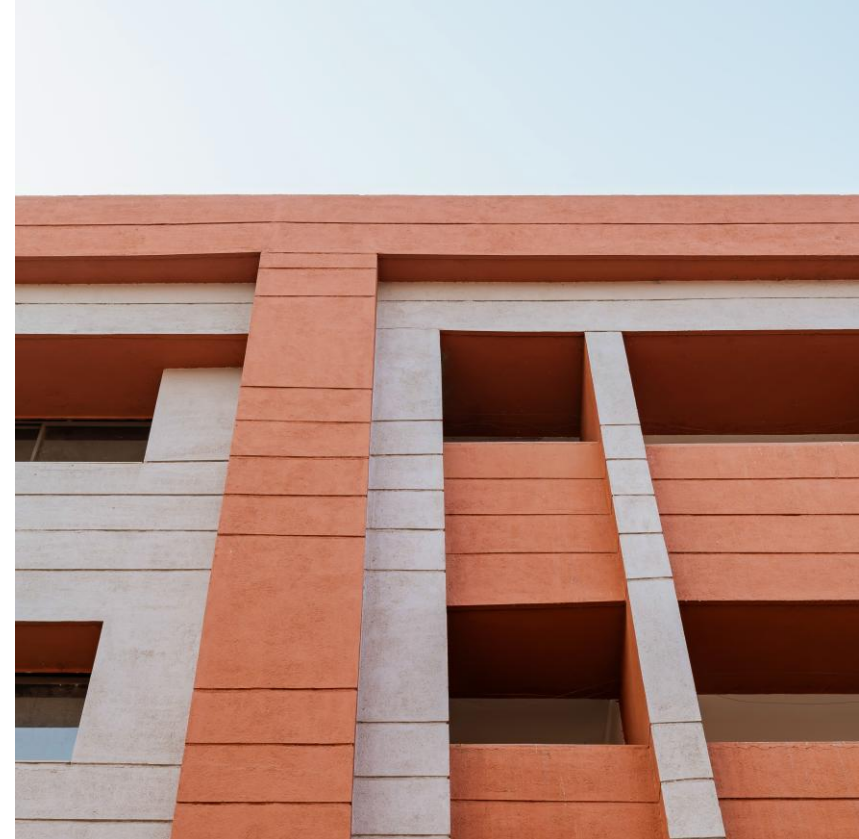
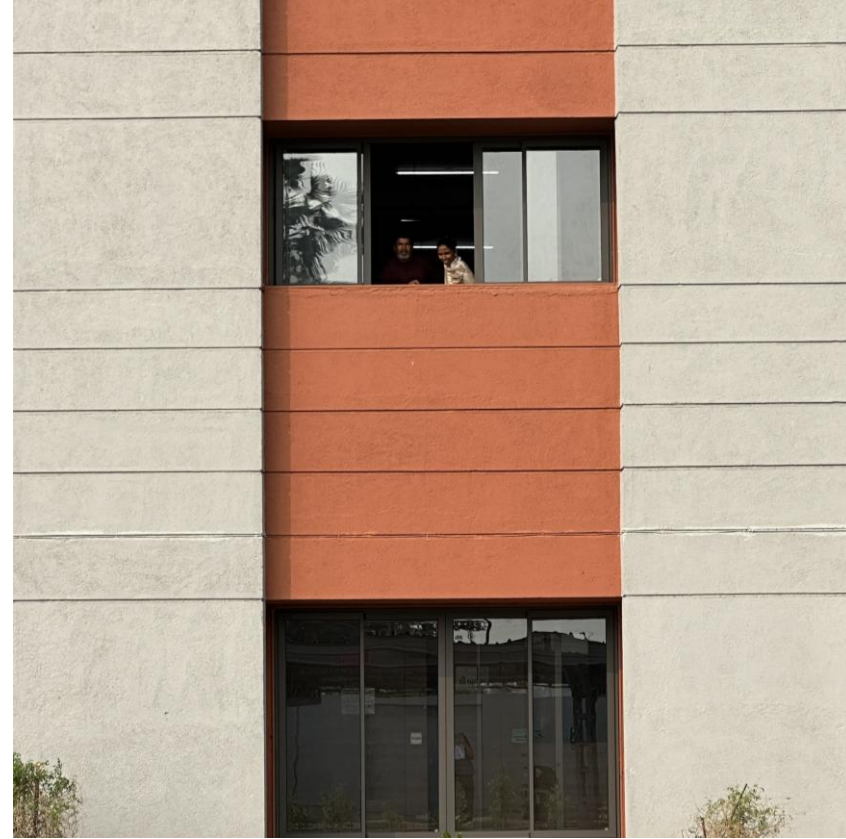
- 19. GIRLS DORM
- 20. GIRLS COMMON ROOM
- 21. TOILETS
- 22. WARDEN CABIN



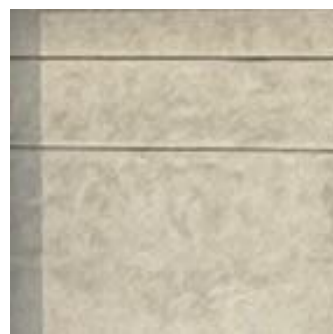
LEGEND

- 1. GIRLS DORM
- 2. GIRLS COMMON ROOM
- 3. TOILETS
- 4. WARDEN ACCOMMODATION
- 5. TERRACE – A/B/C BLOCK
- 6. TERRACE – D BLOCK





TERRACOTA TEXTURE PAINT



LIGHT GREY TEXTURED PAINT



GLASS

FACADE MATERIAL PALETTE



BIRD'S EYE VIEW 1





CAMPUS ENTRANCE - FROM THE MAIN ROAD



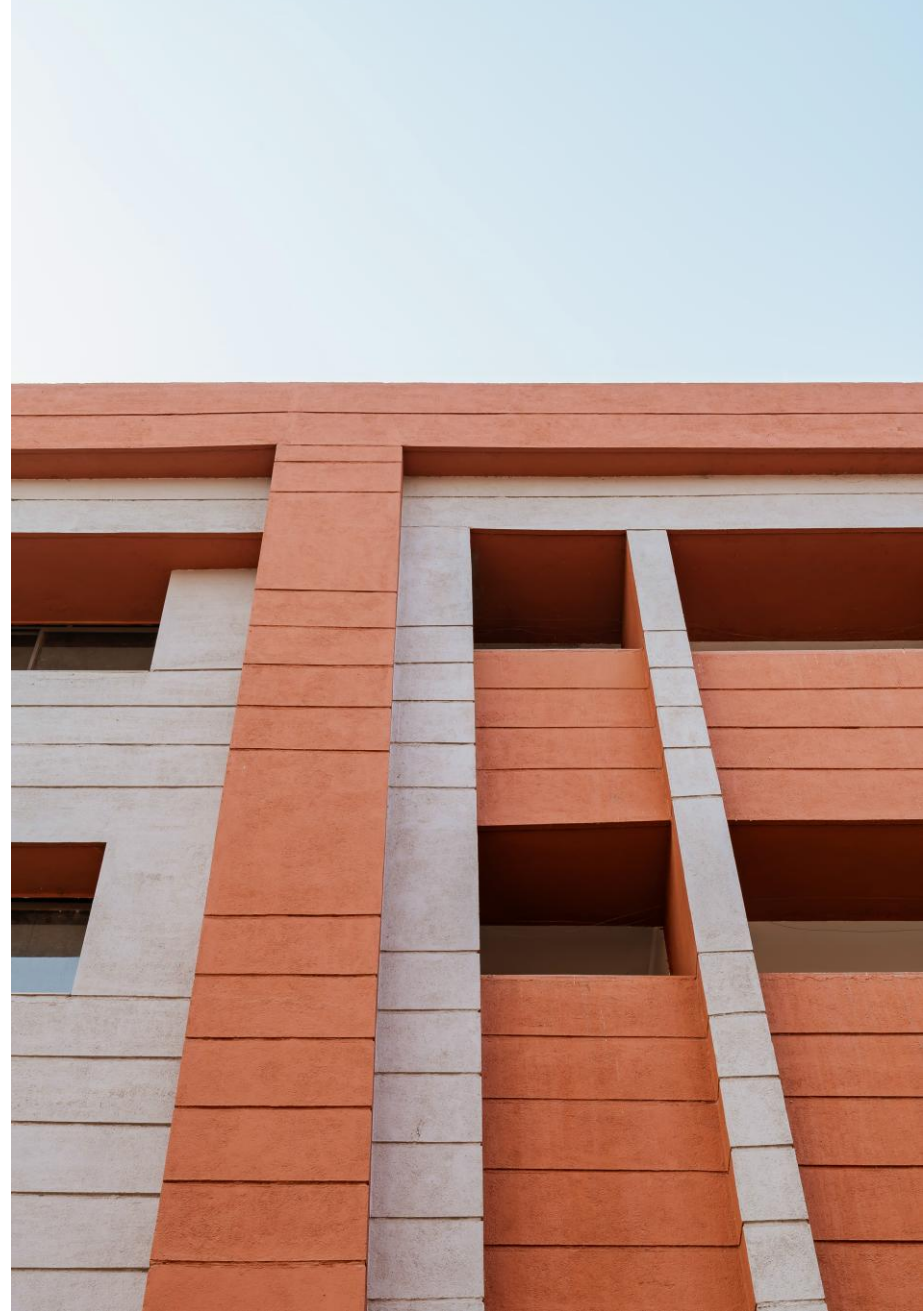
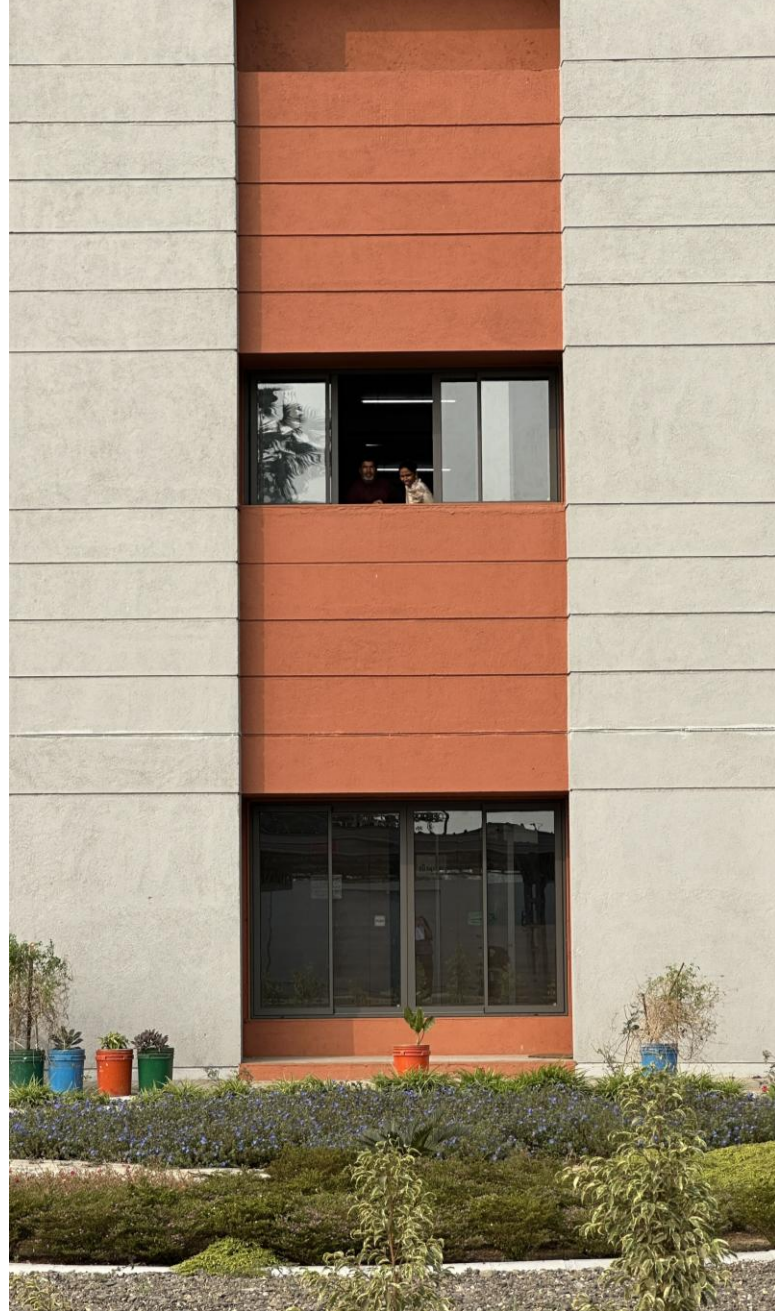
FRONT ELEVATION & PARKING



FRONT ELEVATION FROM ACROSS THE CANAL



OPEN SPACE BETWEEN HOSPITAL & TRAINING CENTRE



EXTERIOR DETAILS – DOUBLE SKIN FACADE & DEEP SEATED WINDOWS



HIGHWAY – CENTRAL CIRCULATION WITH CAFETERIA, WAITING, PHARMACY & OPTICAL SHOP



HIGHWAY – CENTRAL CIRCULATION WITH CAFETERIA, WAITING, PHARMACY & OPTICAL SHOP



OPD WITH SPACIOUS PATIENT WAITING



OPD WITH SPACIOUS PATIENT WAITING



OPERATION THEATRE COMPLEX – CLEAN CORRIDOR



OPERATION THEATRE COMPLEXT – WAITING, OT & PATIENT RECOVERY



DINING & KITCHEN



GENERAL WARD & COMMON CORRIDOR



CLASSROOM & HOSTEL ROOM



SALIENT FEATURES OF THE PROJECT:

1. 241 patient beds, 12 OTs, and a 140-student training center with separate movements for easy access.
2. Building blocks oriented to maximize daylight and window placement for cross ventilation for all non-air conditioned public indoor spaces.
3. Building Foot print is maintained at approx. 40% ground coverage leaving significant open landscape spaces around the buildings for and open central courtyard & institutional lawns making the space feel visually open and easy outdoor access.
4. Building façade designed for adequate weather protection from Rain and Direct harsh sunlight ingress.
5. Space with maximum movement and access from outside are placed on Ground, OT on First floor & Wards & Residence spread on first & second floor, automatically helping easy access, security and provide direct access with shorter travel route.
6. Designed for IGBC certification.
7. Adequate Parking facility for Bus, Cars & 2-wheelers.
8. Barrier-Free movement throughout the campus.
9. Modest aesthetics to make the underprivileged patients to not hesitate in visiting. This is a very important aspect in consideration while designing the aesthetics of the building. Inviting and Comfortable to every kind patient is a priority here.



•
SURAT

•
HYDERABAD

ESSTEAM DESIGN SERVICES LLP

contact us

office.essteam@gmail.com | +91 99090 16610

visit us

 www.essteam.in

 www.facebook.com/EssTeam

 www.instagram.com/studio_essteam/

4th Floor, 'Samanvay', Near Chandni Chowk, Piplod, Surat – 395007 INDIA.

