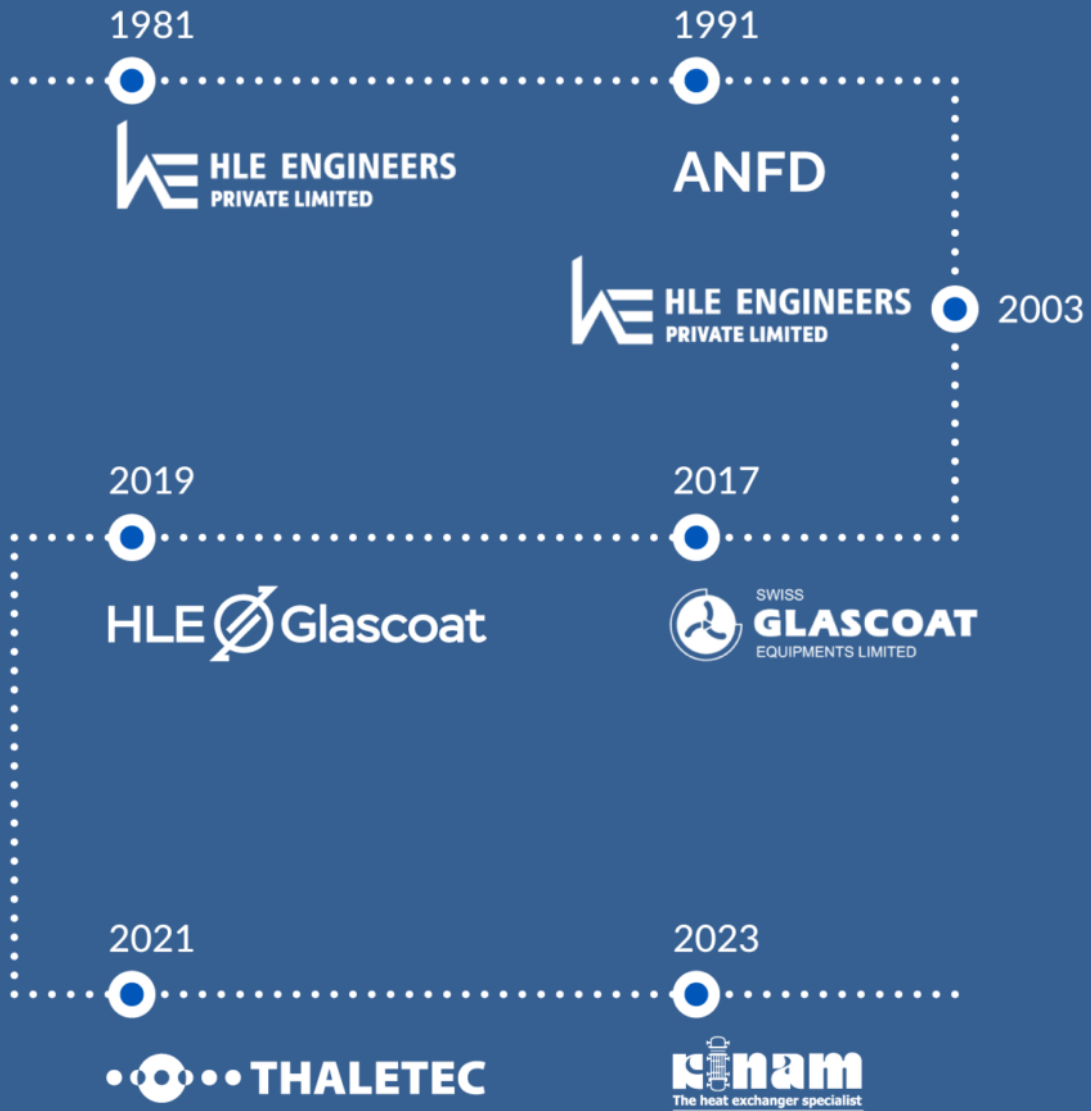




THE FORTRESS OF LIGHT

Architectural Design for a Corporate Office Building

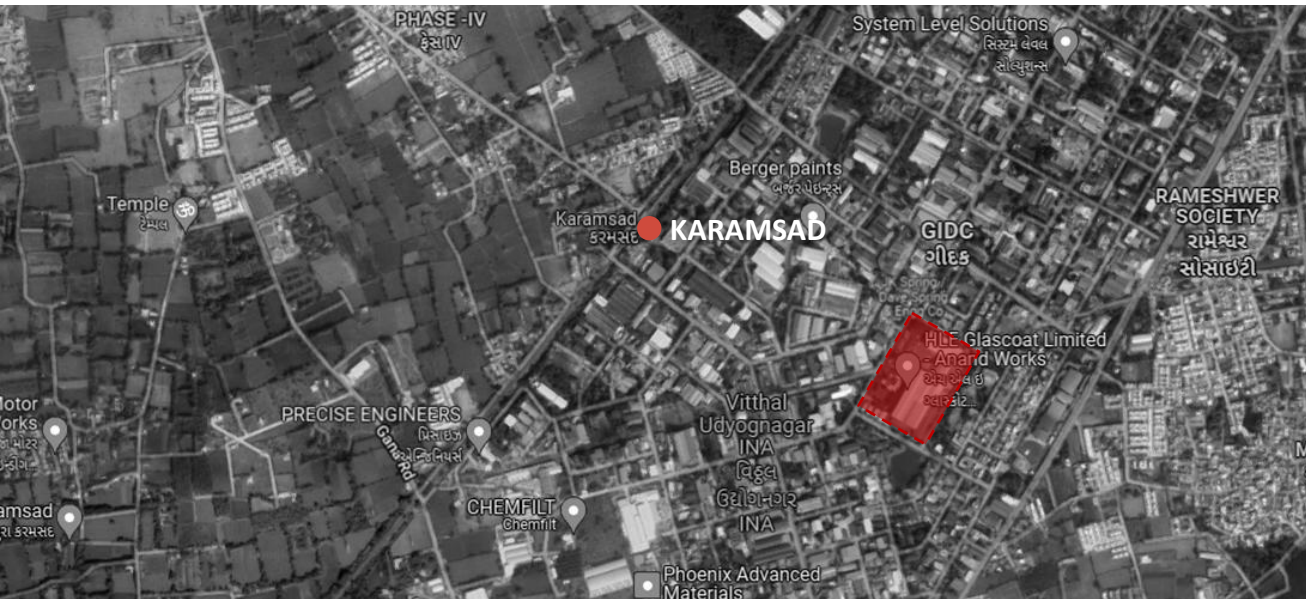
Client:	Mr. Aalap Patel, HLE Glascoat Limited
Site Location:	H-106, Vitthal Udyognagar, Anand 388121
Plot Size:	46,910 sq m
Construction Area:	16,625 sq ft/ 1,545 sq m
Cost of Project:	Confidential
Year of Completion:	2025
Services:	Masterplan, Architecture, Interior Design, MEP Integration, Landscape, Artworks
Firms Involved:	EssTeam, Oblique



EVOLUTION OF HLE GLASCOAT

- HLE Engineers Pvt. Ltd. (HLE) was established in the year 1981. Over the years, HLE emerged as the leading manufacturer of filtration and drying equipment in India and globally.
- In 2017, HLE acquired a controlling stake in Swiss Glascoat Equipments Limited. Glascoat, which was established in the year 1991, was a leading manufacturer of glass lined equipment at the time.
- In 2019, the operating businesses of HLE and Glascoat were integrated via a scheme of arrangement and the resulting company was renamed 'HLE Glascoat Limited'.





THE PROJECT:

Designed as a future-ready campus, the scheme supports organizational growth, operational efficiency, and employee well-being. It accommodates the expansion of the Administration Department while optimizing built space and ensuring access to green views across work areas. A state-of-the-art R&D facility anchors the campus, reinforcing its position as a potential market leader, while the overall plan enhances the sense of arrival through reorganized parking and streamlined movement. Upgraded amenities further elevate workplace standards and contribute to a progressive, cohesive work culture.

THE SITE:

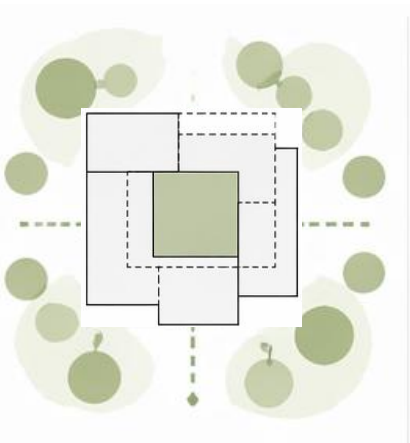
The building lies in an established industrial zone with strong regional connectivity. The existing layout offered a clear framework to reorganize circulation and strengthen the entry sequence, while accommodating new built interventions alongside open green areas.



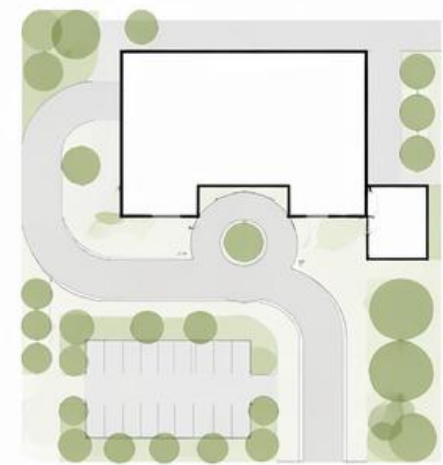
The site is located within an active industrial campus, with a large workshop building directly adjoining it on the south-east edge, generating continuous noise throughout the day. The north-west edge fronts a road, introducing movement, access, and visibility into the site. Climatically, the south-east brings harsh sun and heat gain, while the north-west side is comparatively more open.



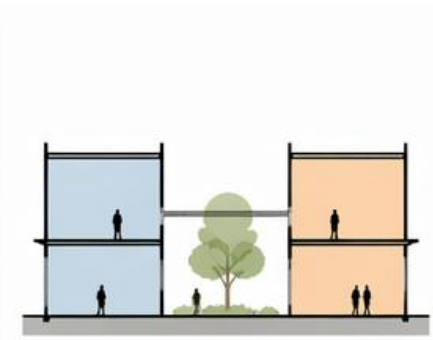
1.



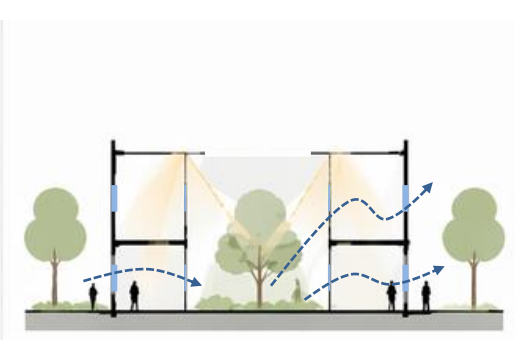
2.



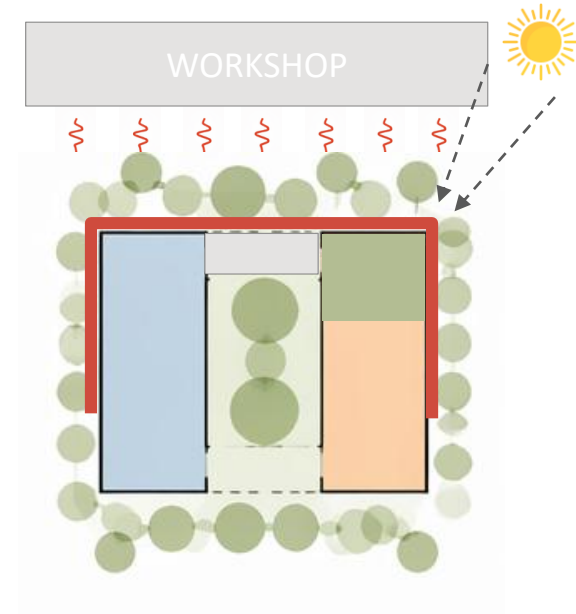
3.



4.



5.



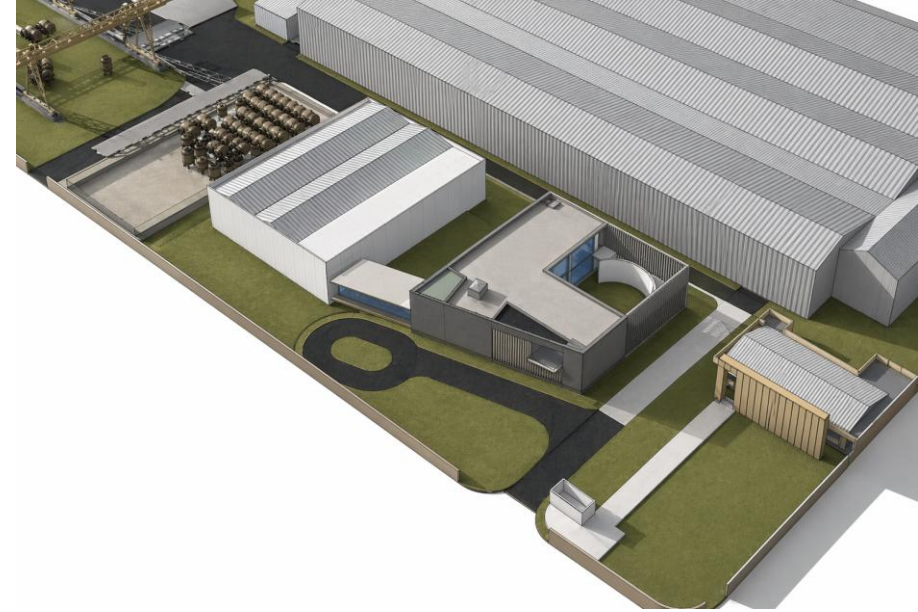
1. **COMPACT FORM & EFFICIENT PLANNING:** Minimize footprint while maintaining clear, continuous visual access to landscape from work areas
2. **IDENTITY & ARRIVAL EXPERIENCE:** Establish a strong campus presence with a legible form and a clear, intuitive entry sequence
3. **INTEGRATED WORK ENVIRONMENT:** Enable close functional links between R&D and administration with defined separation where required
4. **LANDSCAPE, DAYLIGHT & VIEWS:** Use courtyards and perimeter greens to bring daylight into the plan, maintain visual connection to landscape, and provide usable outdoor spaces
5. **ENVIRONMENTAL COMFORT & BUFFERING:** Mitigate noise and improve thermal comfort through building placement, buffered edges, and controlled courtyards



First Approach establishes a strong visual presence through a large formal forecourt and a unified façade, but places workspaces in close proximity to the workshop areas.



Consequent Approach improves spatial quality by introducing usable green pockets, yet still maintains a limited separation between admin functions and workshop zones.

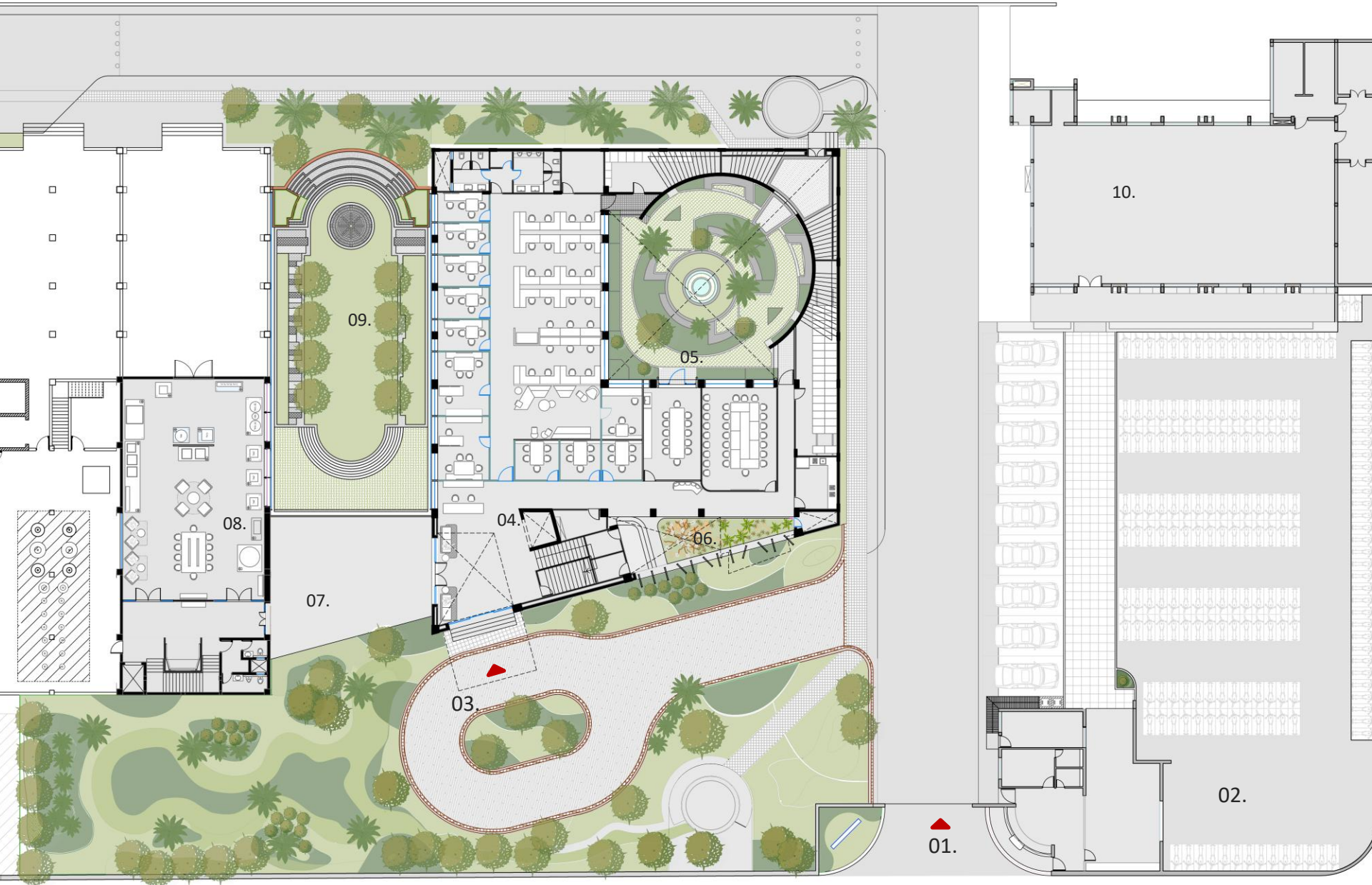


Final Approach rethinks this relationship by maximizing distance between workspaces and the workshop, leading to the introduction of an internal courtyard. This courtyard becomes a controlled, inward-looking green space, buffered by built edges for acoustic protection and restricted for admin use, aligning with the client's requirement for separation between admin and workshop activities.



The layout mitigates workshop noise through layered buffers, including a solid edge, service zones, and courtyards.

Workspaces maintain consistent visual connection to landscaped courtyards, improving daylight and outlook. Courtyards are controlled and accessible only to staff, supporting focused use. A landscaped setback creates separation from the main road, reducing disturbance to the working areas. The entry sequence is widened to provide clear, comfortable access between the campus gate and the building.



- LEGEND:**
- 01. Entry/ Exit
 - 02. Parking
 - 03. Drop-Off Area
 - 04. Admin Building
 - 05. Courtyard 1
 - 06. Courtyard 2
 - 07. Future Cafe
 - 08. R&D Building
 - 09. Courtyard 3
 - 10. Existing Dining and Kitchen

MASTER PLAN





LEGEND:

- | | |
|-------------------------|-------------------------------|
| 01. Reception & Waiting | 13. Store Room with Compactor |
| 02. Passage | 14. Courtyard 2 |
| 03. Courtyard 1 | 15. Store Room |
| 04. Amphitheatre | 16. Server Room |
| 05. Large Cabin | 17. Toilet Block |
| 06. Small Cabin | 18. Lift |
| 07. Workstations | 19. Electrical Panel Room |
| 08. Breakout Zone | 20. Staircase |
| 09. Meeting Room A | 21. Store Room |
| 10. Executive Dining | 22. Toilet |
| 11. Meeting Room B | 23. Courtyard 3 |
| 12. Pantry | 24. Centre for Excellence |

GROUND FLOOR PLAN



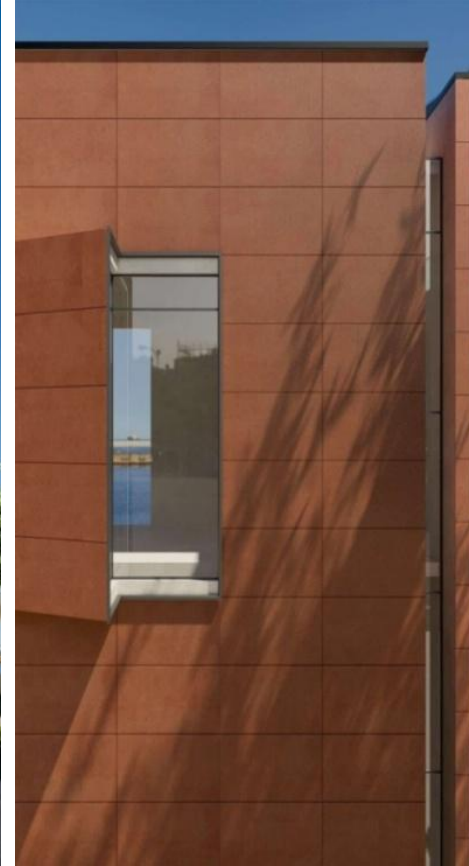


LEGEND:

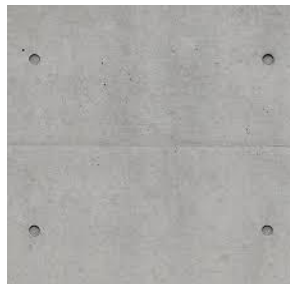
- 01. Large Cabin
- 02. Small Cabin
- 03. Workstations
- 04. Breakout Zone
- 05. Meeting Room
- 06. Director's Cabin
- 07. Director's Cabin - Toilet
- 08. Store Room
- 09. Pantry
- 10. Store Room
- 11. Toilet Block
- 12. Lift
- 13. Staircase

FIRST FLOOR PLAN





TERRACOTTA TILE
(IN THREE COLOURS)



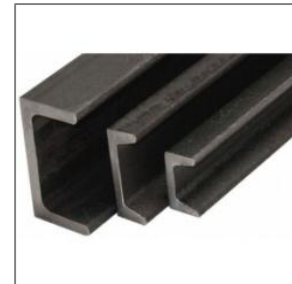
FORM FINISHED RCC



METAL LOUVERS



CORRUGATED
CONCRETE



PAINTED MS



REFLECTIVE GLASS

FACADE MATERIAL PALETTE



ENTRANCE



THALETEC
S.P. AMIN CENTRE OF EXCELLENCE IN GLASS LINING

FACADE

essteam



FACADE DETAILS



COURTYARD



PASSAGE BETWEEN ADMIN BUILDING AND R&D BUILDING



ADMIN BUILDING - MAIN COURTYARD



ADMIN BUILDING - MAIN COURTYARD



ADMIN BUILDING - COURTYARD



ADMIN BUILDING - COURTYARD



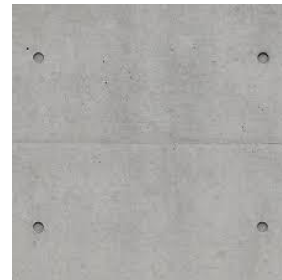
CONCRETE TILE



OAK WOOD



DARK GREY ANODISED ALUMINIUM



PLY FINISH CONCRETE



GLASS LINED TUBE



CORRUGATED SHEET



GREY STUCCO PAINT

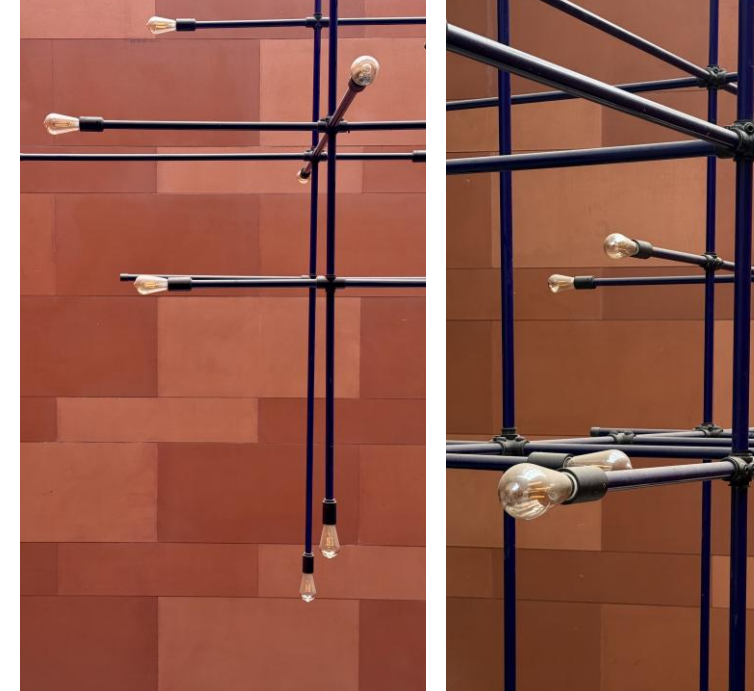
ENTRANCE LOBBY - MATERIAL PALETTE



ENTRANCE LOBBY

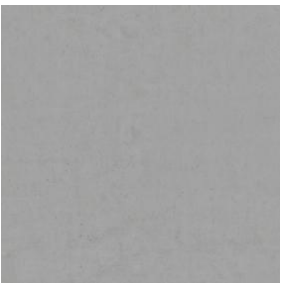


ENTRANCE LOBBY



The chandelier in the entrance lobby showcases the company's advanced glass lining technology at an architectural scale. Each element is precisely fabricated, with pipes glass-lined in cobalt blue, demonstrating clarity, consistency, and control in material performance.

The detailing highlights craftsmanship through clean joints, uniform finishes, and calibrated transparency, positioning the piece as both a lighting feature and a proof of technical capability.



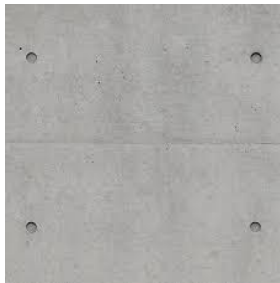
CONCRETE TILE



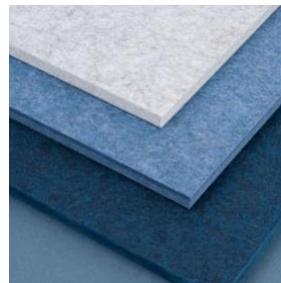
OAK WOOD



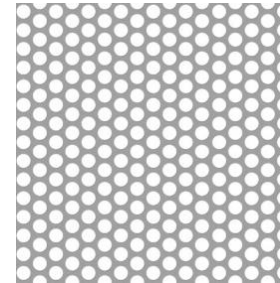
DARK GREY ANODISED ALUMINIUM



PLY FINISH CONCRETE



ACOUSTIC POLYMER SHEETS



PERFORATED SHEET



GREY STUCCO PAINT

WORKSTATIONS - MATERIAL PALETTE



WORKSTATIONS



WORKSTATIONS



MANAGER CABIN & BREAKOUT ZONE



BREAKOUT ZONE



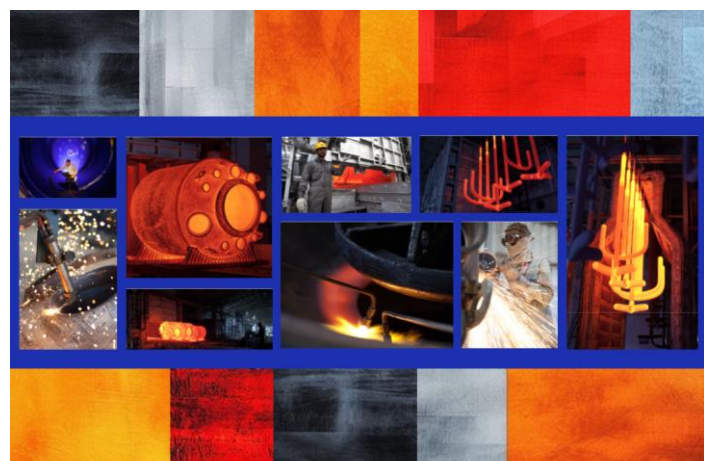
DIRECTOR'S CABIN



DIRECTOR'S CABIN



MEETING ROOM/DINING AREA



ARTWORK



• SURAT • AHMEDABAD • HYDERABAD

ESSTEAM DESIGN SERVICES LLP

contact us

office.essteam@gmail.com | +91 99090 16610

visit us

 www.essteam.in

 www.facebook.com/EssTeam

 www.instagram.com/studio_essteam/

4th Floor, 'Samanvay', Near Chandni Chowk, Piplod, Surat – 395007 INDIA.

