

## TIRUPATI OFFICE

*Architectural Design for an Electrical Company Office*

Client:	Tirupati Sales
Site Location:	Udhna, Surat
Construction Area:	1552 sq m / 16,705 sq ft
Plot Area:	410 sq m
Cost of Project:	Confidential
Year of Completion:	2018
Services:	Architecture, Interior Design, MEP Integration, Art Integration
Firms Involved:	EssTeam, Oblique

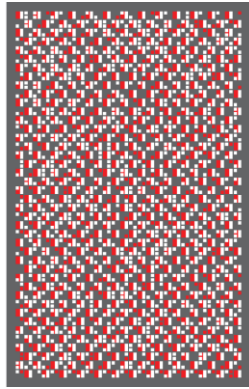


## THE PROJECT:

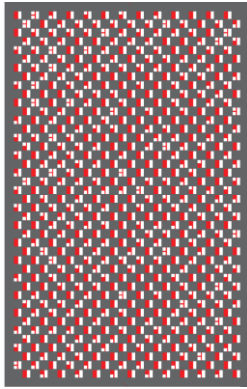
Tirupati Electricals is one of the largest electrical suppliers of electrical materials to the industries as well as the commercial and residential parts in Surat. They were spread over many places earlier, but they wanted to create a space where working in their business is convenient. Make us a building where front side is a showroom and office and back side is a go-down. Everything was consolidated. They were clear that they wanted to do something which all the multinational companies they were dealing with are able to relate and is pure.

## THE SITE:

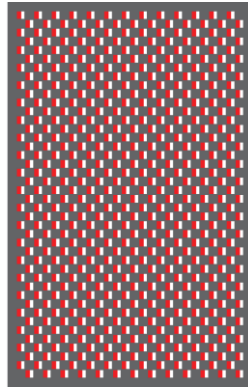
Along side the canal road, the site is located within one of the industrial plots in that area near the Kharwar Nagar BRTS junction in the city of Surat, Gujarat. The site is compact and longitudinal but has enough natural light for the office space internally.



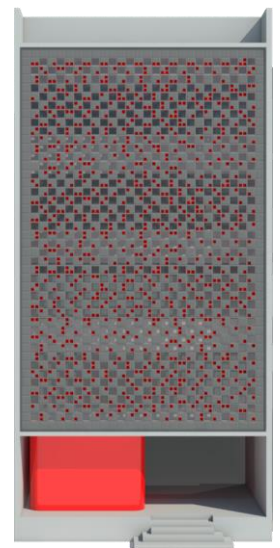
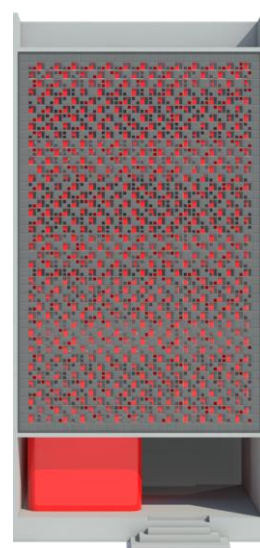
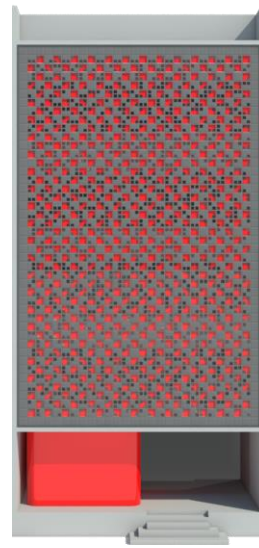
Option 01



Option 02



Option 03



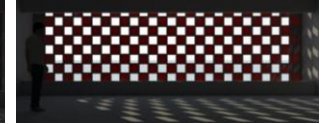
Designing the most efficient façade was a long process with developing different patterns and comparing the efficiency. The pattern is controlled by the motor which makes it extremely flexible for the use. There were two surfaces colored red and grey, the pixilation was random as well as organized.



Closed



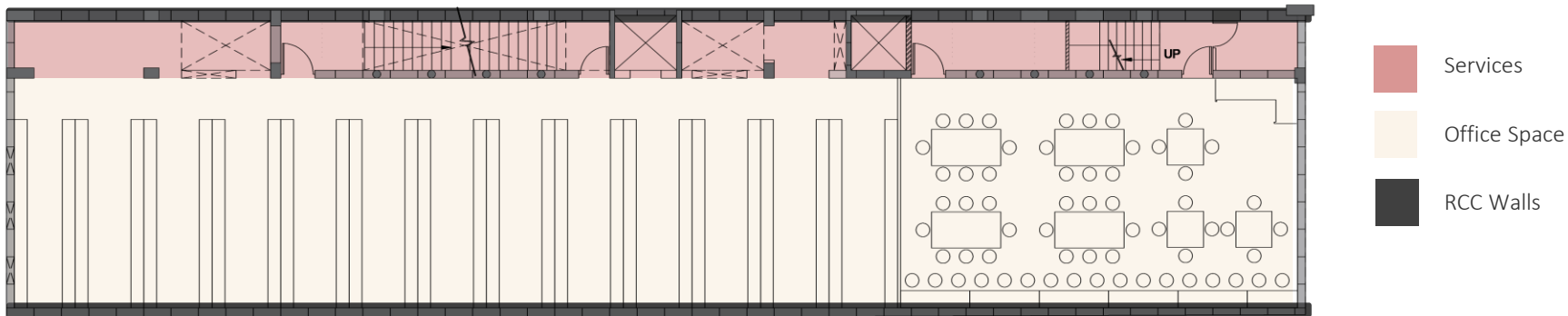
Half Open



Full Open

In order to achieve energy efficiency and protection against excessive solar radiation or heat, a unique façade design was intended, which allows a rhythmic pattern to be realized aesthetically and at the same time functionally.





The site had existing buildings nearby therefore the building was designed on a linear plot between 2 concrete walls. To make the building more spacious, all the services are aligned on one of the edges, making the rest of the usable spaces vast and clear.

The double-heighted area helped organize the storage racks making them easily accessible with a long ladder. The racks are tall which provides better visibility and access to the stored items making the process quick and efficient.

In terms of interiors, the intent was to celebrate open utilities since the client was actually dealing in electrical infrastructural elements which are usually hidden. So an open ceiling plan with very well resolved visible services became an important design language to go with the unplastered cement concrete structure.



## DESIGN INTENT



FORM FINISHED  
CONCRETE



KOTAH STONE



WOOD

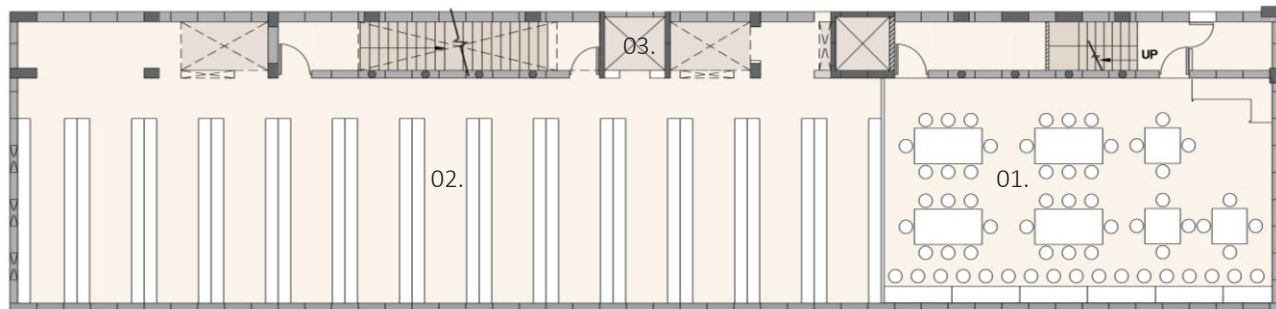


SILVER PEARL  
GRANITE



CRC SECTIONS

The material palette is deduced from our principle values for the project – VALUE FOR MONEY, BUILT TO LAST and EASY TO MAINTAIN. All materials used are locally available and thereby reducing the avoidable increase in Carbon Footprint of this ecologically responsible building.

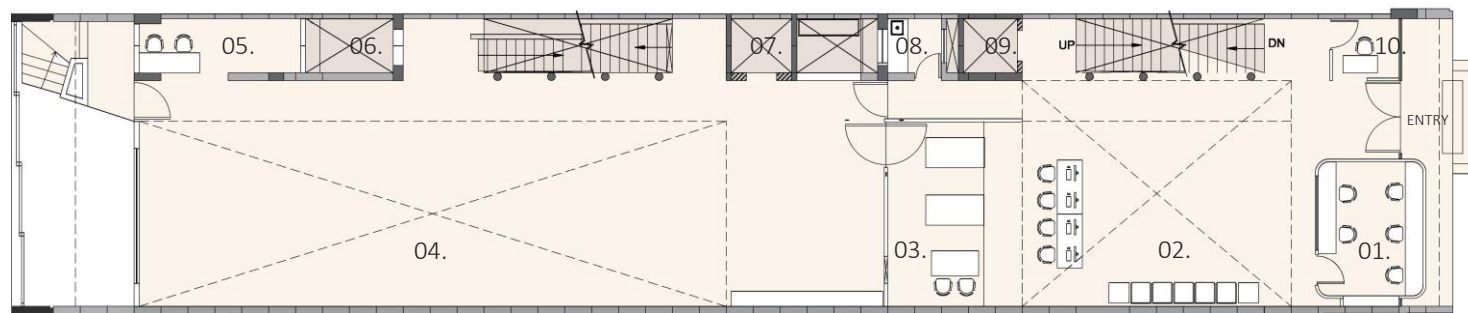


BASEMENT FLOOR PLAN



LEGENDS:

- 01. Dining and Lockers
- 02. Go-down Area
- 03. Goods Elevator



GROUND FLOOR PLAN



LEGENDS:

- 01. Cash Counter
- 02. Waiting Area
- 03. Dispatch Area
- 04. Racks
- 05. Security Area
- 06. Store Area
- 07. Goods Elevator
- 08. Pantry
- 09. Passenger Elevator
- 10. Security Cabin



GROUND FLOOR – THE GODOWN





GROUND FLOOR - DISPATCH AREA AND RACKS





GROUND FLOOR - DISPATCH AREA



BASEMENT – THE STAFF DINING



The cash counter is a round- edged enclosure acting as a highlighter of the entire space with its vibrant red color that adds vivacity to the ambiance.



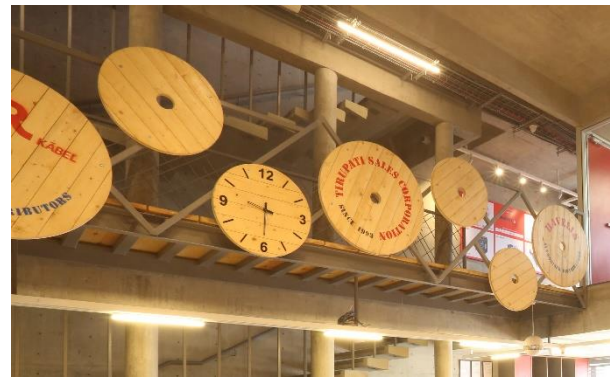


GROUND FLOOR – THE CUSTOMER LOUNGE



GROUND FLOOR – THE CUSTOMER LOUNGE





### *RECYCLE, REDUCE, REUSE !*

Wastage cable reels are recycled and reused in various artistic ways in the waiting area to highlight the importance of company's roots in the electricals for creating seating, light fixtures, artworks and many more.

### GROUND FLOOR – THE CUSTOMER LOUNGE





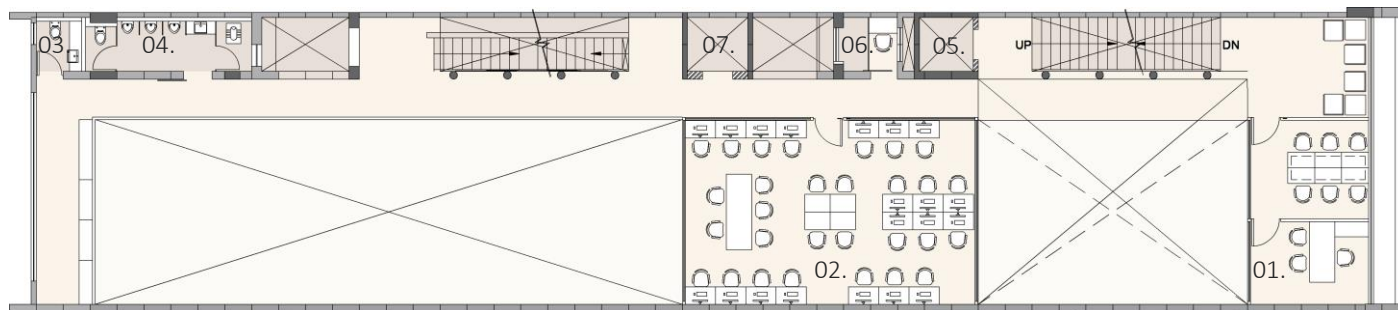
TERRACE

### ***ON-SITE POWER GENERATION***

Taking care of the sustainability aspects specially in an Electrical Company Office is extremely crucial and with the client's strong determination to care for the environment, it was achievable by adding solar photovoltaic panels on the rooftop, making the building energy efficient.



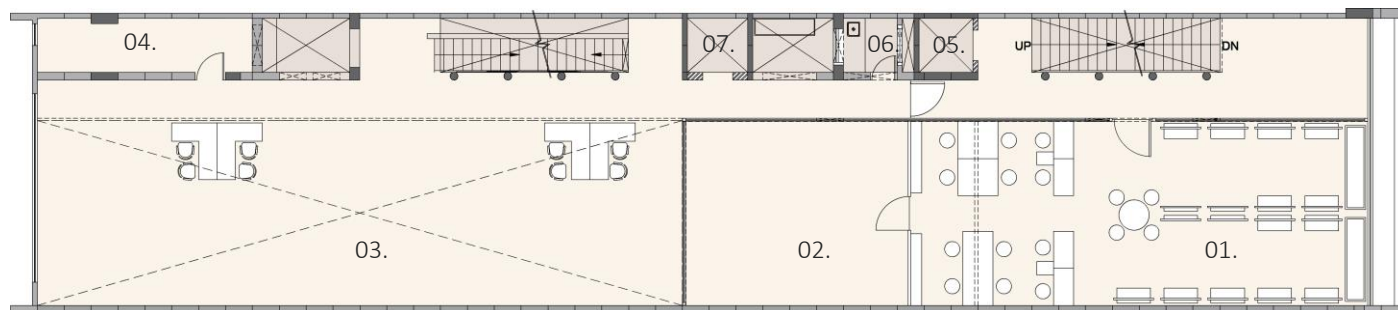
With the use of a checkered plate, the staircase tread is innovatively constructed to keep the entire staircase block-connecting various floor levels, in balance with the rawness of the entire palette.



GROUND MEZZANINE FLOOR PLAN

LEGENDS:

- 01. Meeting Room
- 02. Staff Area
- 03. Female Toilet
- 04. Male Toilet
- 05. Passenger Elevator
- 06. IT Room
- 07. Goods Elevator



FIRST FLOOR PLAN

LEGENDS:

- 01. Light Showroom
- 02. Store Room
- 03. Store Racks
- 04. Store Room
- 05. Passenger Elevator
- 06. Pantry
- 07. Goods Elevator





MEZZANINE FLOOR – THE BRIDGE



MEZZANINE FLOOR – THE BRIDGE





MEZANNINE FLOOR – THE BACK OFFICE





MEZANNINE FLOOR – THE BACK OFFICE



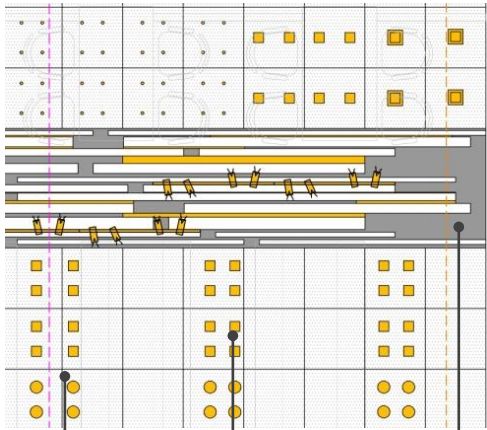
MEZANNINE FLOOR – THE WAITING LOUNGE



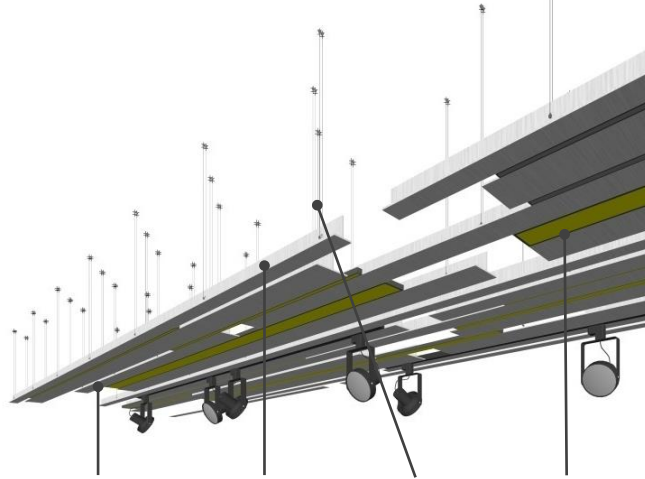


MEZANNINE FLOOR – THE CUSTOMER CARE MEETING ROOM





Perforated metal grid ceiling panel  
Light display area  
Space for linear/Track lights



M.S plate  
M.S plate  
Cables  
Profile/track lights display



Application of the light display

### THE LIGHTING DISPLAY SYSTEM

The most common method of designing a light showroom is leaving perforations in the ceiling where the lights can be displayed which leads to the problem of future empty blocks compromising with the aesthetics of the showroom as the enhancement of technology demands flexible design. So that was achieved by the architect in planning this showroom with innovative ideas and methods where the common problem of change management was resolved.

The challenge was identified and taken up by the architect wherein the ceiling consisted of a perforated metal grid panel comprising of the light fixtures suspending independent pieces that can be arranged and slid according to the size of profile/ track light fixtures. With the help of technology, the M.S plates in the display are made movable and can be adjusted according to the size of the lights.



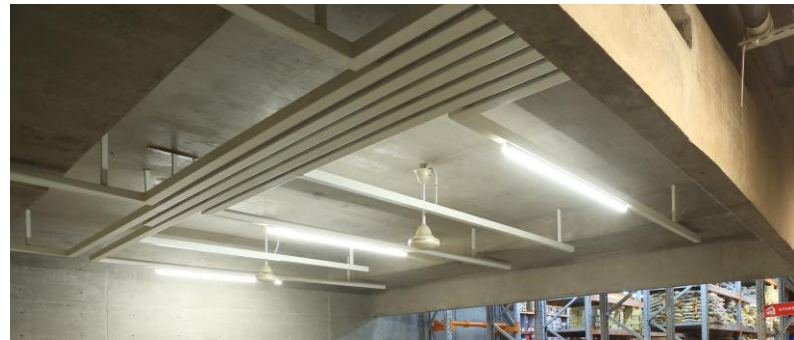
FIRST FLOOR- THE LIGHT RETAIL SHOWROOM

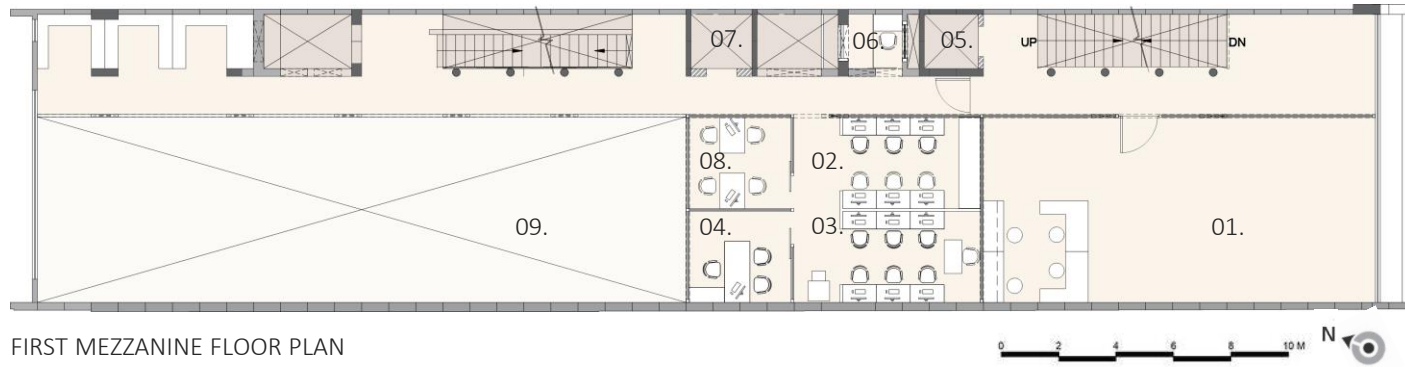


### *ORGANISING THE OPEN SERVICES*

The clients believed that ‘everything should have its roots’, so the light fixtures, cameras, air conditioning piping, etc. are kept exposed in the entire building with reused pipes and are not concealed under false ceiling in order to showcase the wiring system.

### MEZANNINE FLOOR – THE CEILING

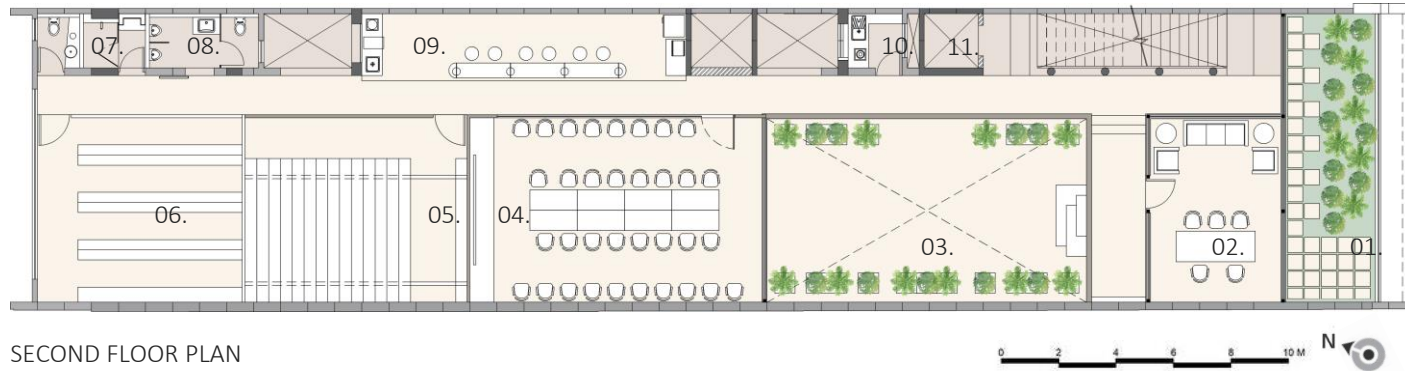




FIRST MEZZANINE FLOOR PLAN

LEGENDS:

- 01. Showroom
- 02. Accounts Dept. Cabin
- 03. Marketing Dept. Cabin
- 04. Staff Cabin
- 05. Passenger Elevator
- 06. Server Room
- 07. Goods Elevator
- 08. Staff Cabin
- 09. Accounts Store Area

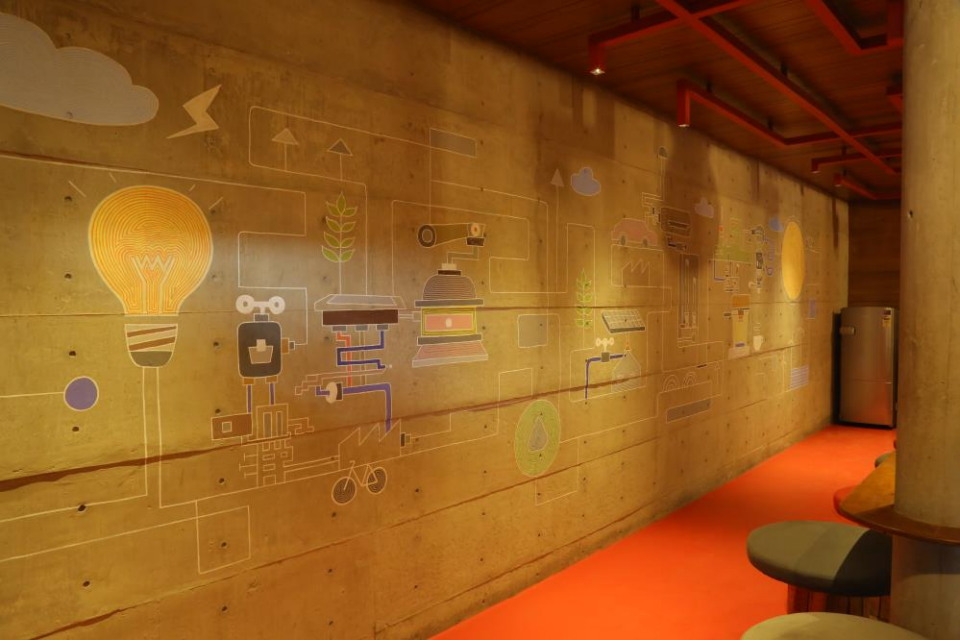


SECOND FLOOR PLAN

LEGENDS:

- 01. Private Landscape Area
- 02. Executive Lounge & Cabin
- 03. Courtyard Space
- 04. Conference Room
- 05. Store Room 01
- 06. Store Room 02
- 07. Toilet
- 08. Shower/ Dressing Room
- 09. Open Pantry & Dining Area
- 10. Utility Area
- 11. Lift Block





Food and coffee is what keeps us going through the hectic office day being the biggest source of energy. The mural in the café suggests giving Energy.



The Courtyard consists of a landscape with stone and plants designed in the middle of the executive offices to provide enough wind and making the floor feel airy which is also used for informal meetings and office gatherings.



EXECUTIVE FLOOR – THE COURTYARD









EXECUTIVE FLOOR – THE ENERGY CAFE



EXECUTIVE FLOOR – THE CONFERENCE ROOM





EXECUTIVE FLOOR – THE CONFERENCE ROOM



SECOND MEZANNINE FLOOR – THE MARKETING DEPARTMENT





SECOND MEZANNINE FLOOR – THE MARKETING DEPARTMENT



SECOND MEZANNINE FLOOR – THE MARKETING DEPARTMENT





• • •  
SURAT AHMEDABAD HYDERABAD

ESSTEAM DESIGN SERVICES LLP

contact us

office.essteam@gmail.com | +91 99090 16610

visit us



[www.essteam.in](http://www.essteam.in)



[www.facebook.com/EssTeam](https://www.facebook.com/EssTeam)



[www.instagram.com/studio\\_essteam/](https://www.instagram.com/studio_essteam/)

4<sup>th</sup> Floor, 'Samanvay', Near Chandni Chowk, Piplod, Surat – 395007 INDIA.

Dhanyavadagalu  
Shukriyaa  
Merci  
Dakujem  
Xie Xie  
Spasibo  
Koszi  
Gracias  
Dakujem  
Dhanyavaad  
Xie Xie  
Grazzi  
Paldies  
Abhārī Āhe  
Kob Kun  
Aabhaar  
Grazie  
Thank You

# Bedankt