



NAROLA OUTHOUSE

Architectural Design for a Residential Villa

Client:	Mr. Kevin Narola
Site Location:	Surat, Gujarat
Construction Area:	600 sq m
Plot Area:	1,110 sq m
Cost of Project:	Confidential
Year of Completion:	2025
Services:	Architecture, Interior Design, MEP Integration, Landscape
Firms Involved:	EsTeam



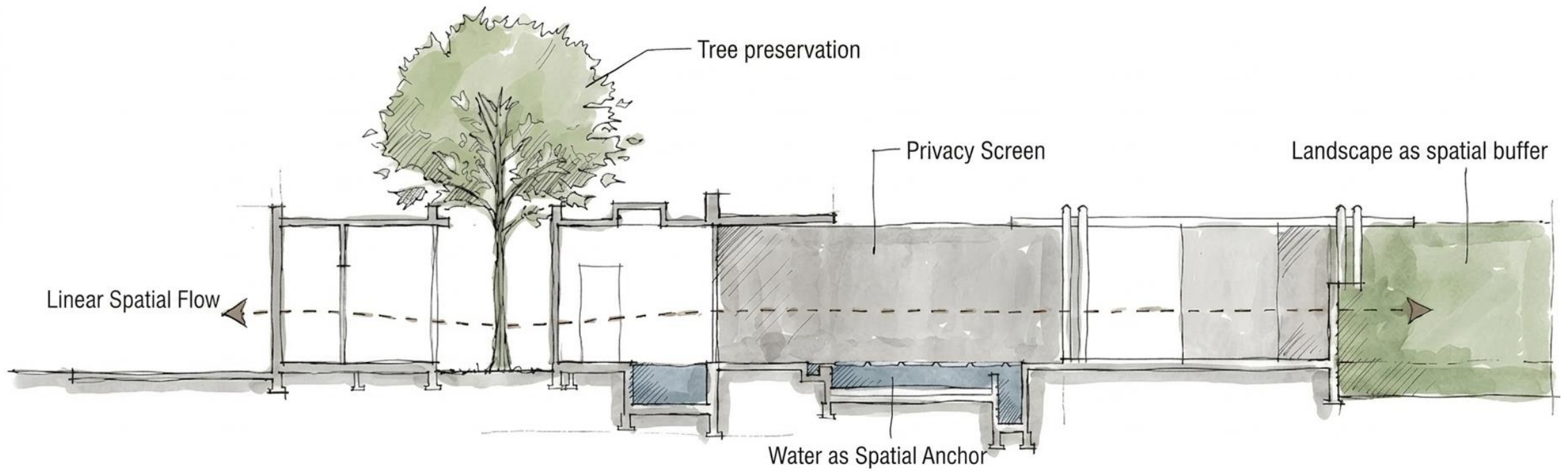
THE PROJECT:

The outhouse is conceived as a leisure-focused extension, bringing together recreation, wellness, and social functions within a unified spatial framework. The program includes activity-based indoor spaces, water features, and outdoor gathering areas, all organized through a clear and intuitive movement sequence. A key intent is to introduce a distinct spatial character within the villa campus, moving away from the prevailing polished aesthetic toward a more grounded, modern rustic expression defined by material depth and tactile quality.



THE SITE:

The site is anchored by an existing outhouse structure and a well established tree cover, both of which were retained and integrated into the proposal. Rather than imposing a new layout, the design responds to these conditions, allowing tree clusters to influence spatial zoning, circulation, and privacy. The existing structure acts as a fixed reference point, around which new interventions are positioned, resulting in a layout that is context-driven and organically configured.



Design Drivers:

1. **Adaptive Integration:** Retaining and extending the existing outhouse structure instead of replacing it, ensuring continuity and efficient use of built mass.
2. **Privacy Through Built & Natural Layers:** Use of concrete screen walls and peripheral tree buffers to create controlled visual permeability, especially around pool and spa zones.
3. **Contrast in Architectural Language:** Deliberate shift from opulent luxury villas to a modern rustic expression using exposed concrete, stone and muted finishes.
4. **Landscape as a Spatial Medium:** Landscape is not residual, it defines movement, buffers spaces and becomes the primary tool for zoning and experience.
5. **Tree Preservation as Planning Generator:** Existing trees inform placement of built masses, pathways and open spaces rather than being treated as obstacles.
6. **Layered Recreational Experience:** Gradation from active (games, pool) to passive (gazebo, lawn) functions across the site.



THE GREEN 'N' BLUE ECSTASY!

Snehal 23.AUG.2023

Concept:

- 1. The Green-Blue Ecstasy:** The interplay between landscape (green) and water elements (blue) is used to craft an immersive sensory experience where built spaces consistently open out to views of either foliage or water, reinforcing a continuous connection to natural elements.
- 2. Linear Spatial Sequencing:** The project unfolds along a clear experiential axis from enclosed indoor spaces to open, landscape-driven zones.
- 3. Fragmented Yet Connected Volumes:** Instead of a single mass, the design breaks into multiple scaled interventions, maintaining permeability across the site.
- 4. Water as Spatial Anchor:** Pools & jacuzzi are positioned as central organizing elements, around which movement and activity have been arranged.
- 5. Transitional Roof Element:** A fabricated connecting roof unifies old and new, acting as both a circulation device and a climatic modifier, while extending into semi-covered outdoor spaces.
- 6. Material Continuity:** A restrained palette ties together diverse functions under a unified identity.

LEGEND:

- 01. Entrance Lobby
- 02. Multipurpose Area
- 03. Powder Toilet + Hand wash
- 04. Shallow Pool
- 05. Swimming Pool
- 06. Jacuzzi
- 07. Kids Pool Area
- 08. Passage Area
- 09. Chilled Water Pool Area
- 10. Sauna
- 11. Female Basin Area
- 12. Female WC Area
- 13. Female Shower + Steam Area
- 14. Male Basin Area
- 15. Male WC Area
- 16. Male Shower + Steam Area
- 17. Open Parking
- 18. Covered Parking
- 19. Garden
- 20. Filter room
- 21. Courtyard-1
- 22. Courtyard-2
- 23. Courtyard-3
- 24. Deck
- 25. Gazebo
- 26. Pathway



FLOOR PLAN



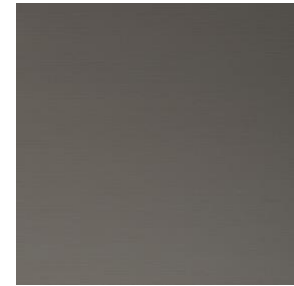
VIEW FROM JACUZZI



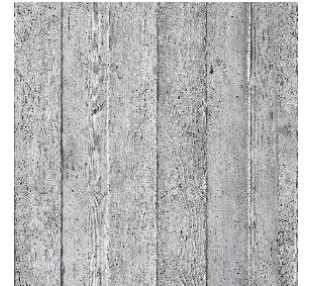
GREY KOTA STONE



VOX PANELS



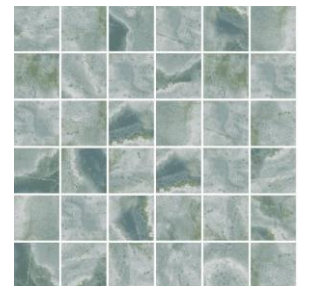
ANODISED ALUMINIUM



CONCRETE



STUCCO PAINT



PICCOLO TILE

The material palette creates a restrained and tactile contrast to the surrounding villas, balancing solidity with warmth through refined detailing to achieve a calm yet distinctive architectural character.



The exposed concrete walls were envisioned to carry a subtle wooden imprint, achieved through the use of flamed pine planks and a debonding agent during casting. However, challenges such as improper debonding, trapped air and the height of pouring led to surface inconsistencies and air pockets. These were addressed through controlled, staged pouring with section-wise planning for the 10 ft height, ensuring an even debonding layer along with gentle vibration and tapping to release trapped air. The process evolved through on-site iterations, resulting in a refined surface that balances raw texture with controlled finish.



The pool zone is conceived as the central recreational focus, comprising a main swimming pool, a kids pool, and an integrated jacuzzi experience. These elements are arranged to create a gradient of use, from supervised shallow areas to more private zones. Safety is addressed through spatial planning, controlled edges, and subtle barriers that prevent unrestricted access without visually fragmenting the space. Privacy is reinforced through the use of concrete walls and landscape buffers.

POOL AREA



POOL AREA



The gazebo is conceived as a quiet, contemplative element within the project, incorporating swing seating and references to Japanese-style low seating. It is positioned within a calmer zone of the site, away from high-activity areas, and serves as a pause point within the overall spatial sequence.

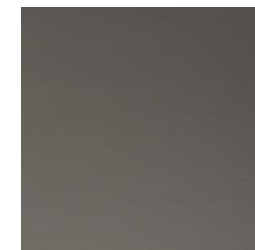




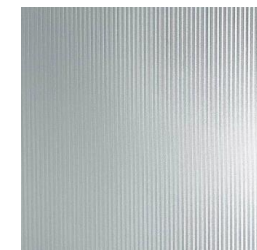
GREY KOTA STONE



VOX PANELS



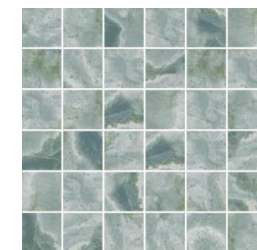
ANODISED ALUMINIUM



FLUTED GLASS



NAXION RIGA GRIGEO
RIGATO



PICCOLO TILE

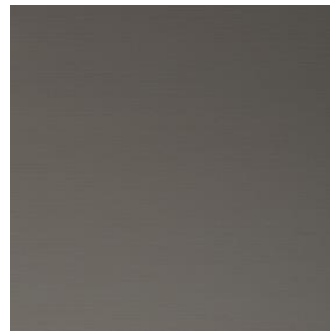
CHILLED POOL



The existing trees are retained and thoughtfully integrated into the planning by organizing built spaces around them as courtyards. Rather than clearing the site, these trees become spatial anchors that shape the layout, creating pockets of light, shade and ventilation within the built fabric. The courtyards not only preserve the natural character of the site but also enhance the experiential quality of movement, establishing a constant visual and climatic connection between the indoors and the landscape.



PINE WOOD



ANODISED ALUMINIUM



FLUTED GLASS



MULTIPURPOSE ROOM

